

# KPNA4 Polyclonal Antibody

Catalog Number: E-AB-60561



**Note:** Centrifuge before opening to ensure complete recovery of vial contents.

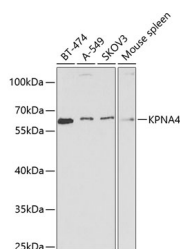
## Description

<b>Reactivity</b>	Human, Mouse, Rat
<b>Immunogen</b>	Recombinant fusion protein of human KPNA4 (NP_002259.1).
<b>Host</b>	Rabbit
<b>Isotype</b>	IgG
<b>Purification</b>	Affinity purification
<b>Conjugation</b>	Unconjugated
<b>Formulation</b>	PBS with 0.02% sodium azide, 50% glycerol, pH7.3.

## Applications Recommended Dilution

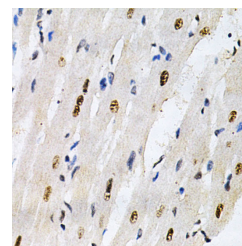
<b>WB</b>	1:500-1:2000
<b>IHC</b>	1:50-1:200
<b>IF</b>	1:50-1:200

## Data

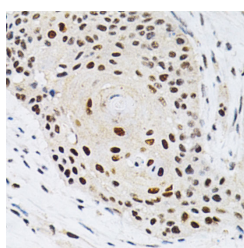


Western blot analysis of extracts of various cell lines using KPNA4 Polyclonal Antibody at dilution of 1:1000.

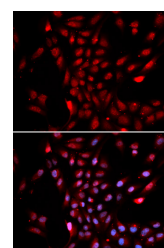
**Observed Mw: 58kDa**  
**Calculated Mw: 57kDa**



Immunohistochemistry of paraffin-embedded Rat heart using KPNA4 Polyclonal Antibody at dilution of 1:200 (40x lens).



Immunohistochemistry of paraffin-embedded Human esophageal cancer using KPNA4 Polyclonal Antibody at dilution of 1:200 (40x lens).



Immunofluorescence analysis of U2OS cells using KPNA4 Polyclonal Antibody

## Preparation & Storage

**Storage** Store at -20°C. Avoid freeze / thaw cycles.

## Background

### For Research Use Only

A Reliable Research Partner in Life Science and Medicine

Toll-free: 1-888-852-8623

Web: [www.elabscience.com](http://www.elabscience.com)

Tel: 1-832-243-6086

Email: [techsupport@elabscience.com](mailto:techsupport@elabscience.com)

Fax: 1-832-243-6017

# KPNA4 Polyclonal Antibody

Catalog Number: E-AB-60561



The nuclear import of karyophilic proteins is directed by short amino acid sequences termed nuclear localization signals (NLSs). Karyopherins, or importins, are cytoplasmic proteins that recognize NLSs and dock NLS-containing proteins to the nuclear pore complex. The protein encoded by this gene shares the sequence similarity with *Xenopus* importin-alpha and *Saccharomyces cerevisiae* Srp1. This protein is found to interact with the NLSs of DNA helicase Q1 and SV40 T antigen.

---

## For Research Use Only

A Reliable Research Partner in Life Science and Medicine

Toll-free: 1-888-852-8623

Tel: 1-832-243-6086

Fax: 1-832-243-6017

Web: [www.elabscience.com](http://www.elabscience.com)

Email: [techsupport@elabscience.com](mailto:techsupport@elabscience.com)