

## Recombinant Myosin Light Chain 3 Monoclonal Antibody

catalog number: **AN301607L**

**Note:** Centrifuge before opening to ensure complete recovery of vial contents.

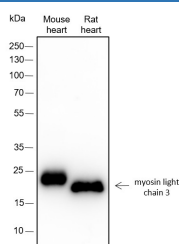
### Description

|                     |   |
|---------------------|---|
| <b>Reactivity</b>   | Human;Rat;Mouse   |
| <b>Immunogen</b>    | Recombinant human Myosin Light Chain 3 fragment                 |
| <b>Host</b>         | Rabbit  |
| <b>Isotype</b>      | IgG, $\kappa$   |
| <b>Clone</b>        | A310  |
| <b>Purification</b> | Protein A purified  |
| <b>Buffer</b>       | PBS, 50% glycerol, 0.05% Proclin 300, 0.05% protein protectant. |

### Applications Recommended Dilution

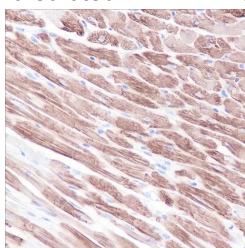
|            |              |
|------------|--------------|
| <b>WB</b>  | 1:500-1:2000 |
| <b>IHC</b> | 1:200-1:1000 |
| <b>FCM</b> | 1:50-1:100   |

### Data

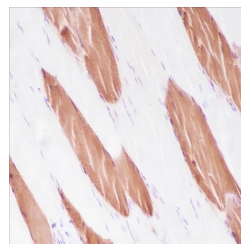
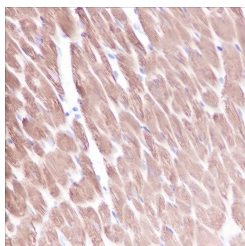


Western Blot with Myosin Light Chain 3 Monoclonal Antibody at dilution of 1:2000. Lane 1: Mouse heart, Lane 2: Rat heart

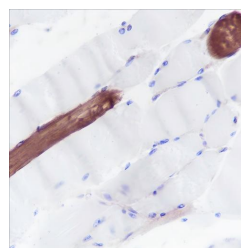
**Observed-MW:22 kDa**  
**Calculated-MW:22 kDa**



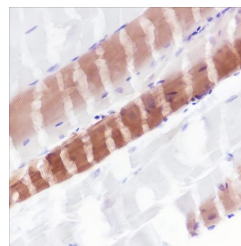
Immunohistochemistry of paraffin-embedded Mouse cardiac muscle using Myosin Light Chain 3 Monoclonal Antibody at dilution of 1:1000.



Immunohistochemistry of paraffin-embedded Human skeletal muscle using Myosin Light Chain 3 Monoclonal Antibody at dilution of 1:1000.



Immunohistochemistry of paraffin-embedded Mouse skeletal muscle using Myosin Light Chain 3 Monoclonal Antibody at dilution of 1:1000.



### For Research Use Only

Toll-free: 1-888-852-8623  
Web: [www.elabscience.com](http://www.elabscience.com)

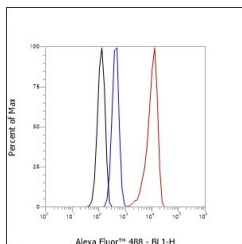
Tel: 1-832-243-6086  
Email: [techsupport@elabscience.com](mailto:techsupport@elabscience.com)

Fax: 1-832-243-6017

Rev. V1.0

Immunohistochemistry of paraffin-embedded Rat cardiac muscle using Myosin Light Chain 3 Monoclonal Antibody at dilution of 1:1000.

Immunohistochemistry of paraffin-embedded Rat skeletal muscle using Myosin Light Chain 3 Monoclonal Antibody at dilution of 1:1000.



Flow cytometric analysis of human Myosin Light Chain 3 expression on U-2 OS cells. Cells were stained with purified anti-Human Myosin Light Chain 3, then a Alexa Fluor 488-conjugated second step antibody. The histogram were derived from events with the forward and side light-scatter characteristics of intact cells.

## Preparation & Storage

|                 |   |
|-----------------|---|
| <b>Storage</b>  | Store at -20°C Valid for 12 months. Avoid freeze / thaw cycles. |
| <b>Shipping</b> | Ice bag   |

## Background

MYL3, also named as MLC1v, is an essential light chain of myosin that is associated with muscle contraction. It is expressed in ventricular and slow skeletal muscle. MYL3 may serve as a target for caspase-3 in dying cardiomyocytes. Mutations of MYL3 gene cause hypertrophic cardiomyopathy. MYL3 has been identified as potential serum biomarker for drug induced myotoxicity. Great increase in MYL3 serum concentration has been observed in rats with cardiac and skeletal muscle injury.

## For Research Use Only