

Purified Anti-Mouse Ly6C Antibody[Monts 1], Functional Grade

catalog number: E-AB-F11210

Note: Centrifuge before opening to ensure complete recovery of vial contents.

Description

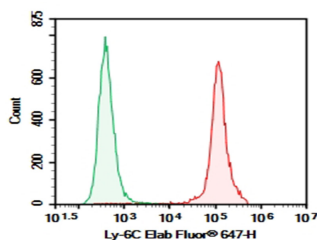
Reactivity	Mouse
Immunogen	Recombinant Mouse Ly-6C protein
Host	Rat
Isotype	Rat IgG2a, κ
Clone	Monts 1
Purification	>98%, Protein A/G purified
Buffer	Sterile PBS, pH 7.2. < 1.0 EU per mg of the antibody as determined by the LAL method.

Applications

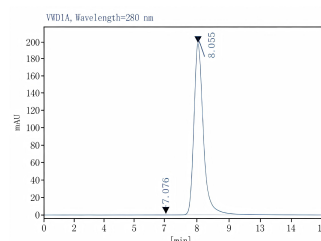
Recommended Dilution

FCM	2 µg/mL (0.5×10 ⁶ - 1×10 ⁶ cells)
Depletion	Reported in the literature

Data



C57BL/6 Mouse bone marrow cells were stained with 0.2 µg Purified Anti-Mouse Ly6C Antibody[Monts 1], Functional Grade (Right) and 0.2 µg Rat IgG2a, κ Isotype Control (Left), followed by Elab Fluor® 647-conjugated Goat Anti-Rat IgG Secondary Antibody.



Monomer purity ≥95% as determined by analytical size-exclusion chromatography (SEC)

Preparation & Storage

Storage	Store at 4°C valid for 12 months or -20°C valid for long term storage, avoid freeze / thaw cycles. This preparation contains no preservatives, thus it should be handled under aseptic conditions.
Shipping	Ice bag

Background

Most hematopoietic cells express one or more members of Ly-6 family. The expression of Ly-6 varies with development stage and activation. Ly-6C is a 14-17 kD GPI-linked surface protein expressed on mouse monocyte/macrophage cells, endothelial cells, neutrophils, and some T cell subsets. Ly-6C is reported to be an indicator of memory CD8+ T cells.

None (Azide-Free, Low Endotoxin) are perfectly suited to be used in culture or in vivo (for nonhuman studies) for functional assays blocking, neutralizing, activation or depletion where the presence of azide may damage cells or exogenous endotoxin may signal or activate cells.

Application References

For Research Use Only

Alexander M Rowe, et al. J Immunol. 2017 Feb 15;198(4):1706-1717.

For Research Use Only

Toll-free: 1-888-852-8623
Web: www.elabscience.com

Tel: 1-832-243-6086
Email: techsupport@elabscience.com

Fax: 1-832-243-6017

Rev. V2.8