

# Recombinant Human IL-20RA/IL-20R1 Protein (His Tag)



Catalog Number:PKSH031633

**Note:** Centrifuge before opening to ensure complete recovery of vial contents.

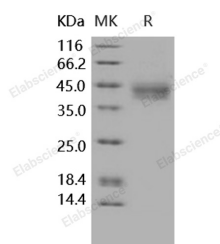
## Description

<b>Synonyms</b>	Interleukin-20 Receptor Subunit Alpha;IL-20 Receptor Subunit Alpha;IL-20R-Alpha;IL-20RA;Cytokine Receptor Class-II Member 8;Cytokine Receptor Family 2 Member 8;CRF2-8;IL-20R1;ZcytoR7;IL20RA
<b>Species</b>	Human
<b>Expression Host</b>	HEK293 Cells
<b>Sequence</b>	Met 1-Lys 250
<b>Accession</b>	NP_055247.21
<b>Calculated Molecular Weight</b>	26.8 kDa
<b>Observed molecular weight</b>	40-45 kDa
<b>Tag</b>	C-His

## Properties

<b>Purity</b>	> 95 % as determined by reducing SDS-PAGE.
<b>Endotoxin</b>	< 1.0 EU per µg of the protein as determined by the LAL method.
<b>Storage</b>	Generally, lyophilized proteins are stable for up to 12 months when stored at -20 to -80°C. Reconstituted protein solution can be stored at 4-8°C for 2-7 days. Aliquots of reconstituted samples are stable at < -20°C for 3 months.
<b>Shipping</b>	This product is provided as lyophilized powder which is shipped with ice packs.
<b>Formulation</b>	Lyophilized from sterile PBS, pH 7.2 Normally 5 % - 8 % trehalose, mannitol and 0.01 % Tween80 are added as protectants before lyophilization. Please refer to the specific buffer information in the printed manual.
<b>Reconstitution</b>	Please refer to the printed manual for detailed information.

## Data



> 95 % as determined by reducing SDS-PAGE.

## Background

Interleukin 20 receptor, alpha subunit (IL20RA/IL-20RA) also known as IL-20 receptor subunit alpha, Cytokine receptor class-II member 8, interleukin-20 receptor I, and interleukin-20 receptor subunit alpha, is a subunit for the interleukin-20 receptor. IL20RA/IL-20RA belongs to the type II cytokine receptor family. This cytokine is a receptor for interleukin 20 (IL20), a cytokine that may be involved in epidermal function. The receptor of IL20 is a heterodimeric receptor complex consisting of this protein and interleukin 20 receptor beta (IL20B). IL20RA forms heterodimer with IL20RB, and the complex serves as a receptor for IL19, IL20 and IL24. All three are capable of signaling through IL-20RA/IL-20RB

## For Research Use Only

A Reliable Research Partner in Life Science and Medicine

Toll-free: 1-888-852-8623

Web: [www.elabscience.com](http://www.elabscience.com)

Tel: 1-832-243-6086

Email: [techsupport@elabscience.com](mailto:techsupport@elabscience.com)

Fax: 1-832-243-6017

# Recombinant Human IL-20RA/IL-20R1 Protein (His Tag)



Catalog Number: PKSH031633

---

complex. The ligand binding to receptor B creating a high-affinity binding site for the receptor A which is recruited to complete the complex. In addition, IL20RA also forms a heterodimer with the unique and specific receptor IL10RB and functions as the receptor for IL26. IL20RA is widely expressed with highest levels in skin, testis and brain. The expression of both IL20RA and IL20RB is found to be upregulated in psoriatic skin lesions on keratinocytes.

---

## For Research Use Only

A Reliable Research Partner in Life Science and Medicine

Toll-free: 1-888-852-8623

Web: [www.elabscience.com](http://www.elabscience.com)

Tel: 1-832-243-6086

Email: [techsupport@elabscience.com](mailto:techsupport@elabscience.com)

Fax: 1-832-243-6017