

# DLG4 Polyclonal Antibody

Catalog Number: E-AB-70135

**Note:** Centrifuge before opening to ensure complete recovery of vial contents.

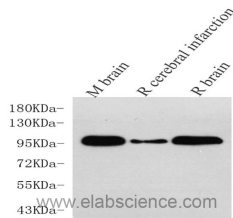
## Description

|                     |  |
|---------------------|--|
| <b>Reactivity</b>   | Mouse, Rat   |
| <b>Immunogen</b>    | KLH conjugated Synthetic peptide corresponding to Mouse PSD95              |
| <b>Host</b>         | Rabbit   |
| <b>Isotype</b>      | IgG  |
| <b>Purification</b> | Affinity purification  |
| <b>Conjugation</b>  | Unconjugated   |
| <b>Formulation</b>  | PBS with 0.02% sodium azide, 1% protective protein and 50% glycerol, pH7.4 |

## Applications Recommended Dilution

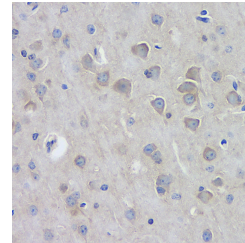
|            |              |
|------------|--------------|
| <b>WB</b>  | 1:500-1:1000 |
| <b>IHC</b> | 1:100-1:200  |

## Data

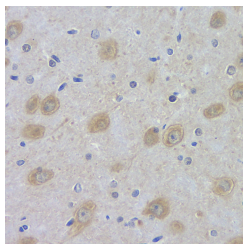


Western Blot analysis of various samples using DLG4 Polyclonal Antibody at dilution of 1:750.

**Observed Mw:95kDa**  
**Calculated Mw:95kDa**



Immunohistochemistry analysis of paraffin-embedded mouse brain using DLG4 Polyclonal Antibody at dilution of 1:100.



Immunohistochemistry analysis of paraffin-embedded rat brain using DLG4 Polyclonal Antibody at dilution of 1:100.

## Preparation & Storage

**Storage** Store at -20°C. Avoid freeze / thaw cycles.

## Background

This gene encodes a member of the membrane-associated guanylate kinase (MAGUK) family. It heteromultimerizes with another MAGUK protein, DLG2, and is recruited into NMDA receptor and potassium channel clusters. These two MAGUK proteins may interact at postsynaptic sites to form a multimeric scaffold for the clustering of receptors, ion

## For Research Use Only

A Reliable Research Partner in Life Science and Medicine

Toll-free: 1-888-852-8623

Web: [www.elabscience.com](http://www.elabscience.com)

Tel: 1-832-243-6086

Email: [techsupport@elabscience.com](mailto:techsupport@elabscience.com)

Fax: 1-832-243-6017

# DLG4 Polyclonal Antibody

Catalog Number: E-AB-70135



channels, and associated signaling proteins. Multiple transcript variants encoding different isoforms have been found for this gene.

---

## For Research Use Only

A Reliable Research Partner in Life Science and Medicine

Toll-free: 1-888-852-8623

Tel: 1-832-243-6086

Fax: 1-832-243-6017

Web: [www.elabscience.com](http://www.elabscience.com)

Email: [techsupport@elabscience.com](mailto:techsupport@elabscience.com)