

## PE/Cyanine5.5 Anti-Mouse Ly6A/E(Sca-1) Antibody[D7]

**Catalog Number:** E-AB-F1191UI

**Note:** Centrifuge before opening to ensure complete recovery of vial contents.

### Description

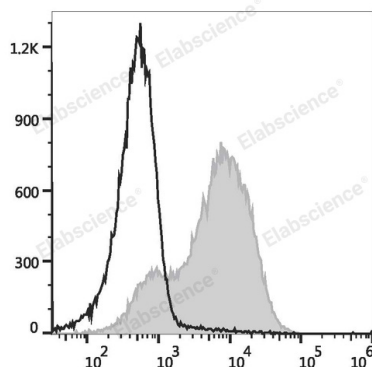
|                                |  |
|--------------------------------|--|
| <b>Reactivity</b>              | Mouse  |
| <b>Host</b>                    | Rat  |
| <b>Isotype</b>                 | Rat IgG2a, $\kappa$  |
| <b>Clone No.</b>               | D7   |
| <b>Isotype Control</b>         | PE/Cyanine5.5 Rat IgG2a, $\kappa$ Isotype Control[2A3] [Product E-AB-F09833I]  |
| <b>Conjugation</b>             | PE/Cyanine 5.5   |
| <b>Conjugation Information</b> | PE/Cyanine5.5 is designed to be excited by the Blue (488 nm), Green (532 nm) and yellow-green (561 nm) lasers and detected using an optical filter centered near 690 nm (e.g., a 690/50 nm bandpass filter). |
| <b>Storage Buffer</b>          | Phosphate buffered solution, pH 7.2, containing 0.09% stabilizer.  |

### Applications

### Recommended usage

|            |  |
|------------|--|
| <b>FCM</b> | Each lot of this antibody is quality control tested by flow cytometric analysis. Please check your vial before the experiment. Since applications vary, the appropriate dilutions must be determined for individual use. We suggest each investigator should titrate the reagent to obtain optimal results [The recommended concentration is 0.1-1 $\mu$ g/10 <sup>6</sup> cells in 100 $\mu$ L volume]. |
|------------|--|

### Data



C57BL/6 murine splenocytes are stained with PE/Cyanine5.5 Anti-Mouse Ly6A/E(Sca-1) Antibody (filled gray histogram) or PE/Cyanine5.5 Rat IgG2a,  $\kappa$  Isotype Control (empty black histogram).

### Preparation & Storage

|                 |   |
|-----------------|---|
| <b>Storage</b>  | Keep as concentrated solution.<br>This product can be stored at 2-8°C for 24 months. Please protected from prolonged exposure to light and do not freeze. |
| <b>Shipping</b> | Ice bag   |

### Antigen Information

|                        |                                    |
|------------------------|------------------------------------|
| <b>Alternate Names</b> | Ly-6A.2/Ly-6E.1;Ly6;Ly6a;SCA-1;TAP |
| <b>Uniprot ID</b>      | P05533                             |
| <b>Gene ID</b>         | 110454                             |

### For Research Use Only

## Background

Ly-6A/E, also known as Sca-1, is an 18 kD member of the Ly-6 multigene family. Ly6A/E is a glycosylphosphatidylinositol (GPI)-linked protein expressed on hematopoietic stem cells. In mice expressing the Ly-6.2 haplotype (e.g., AKR, C57BL, C57BR, DBA/2, SJL, SWR, and 129), Ly-6A/E is also expressed on peripheral B lymphocytes and thymic and peripheral T lymphocytes. Strains expressing the Ly-6.1 haplotype (e.g., BALB/c, CBA, C3H/He, DBA/1, and NZB) have low Ly-6A/E expression on resting peripheral lymphocytes. The expression of Ly-6A/E on lymphocytes is upregulated upon activation from both Ly6.1 and Ly6.2 haplotype mice. Ly-6A/E is thought to be involved in the regulation of both T and B cell responses.