

Recombinant Human 2B4/CD244 protein (His tag)

Catalog Number:PDMH100145



Note: Centrifuge before opening to ensure complete recovery of vial contents.

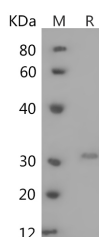
Description

Synonyms	Natural killer cell receptor 2B4;NK cell activation-inducing ligand;NAIL;NKR2B4;h2B4;SLAM family member 4;SLAMF4;CD244;2B4
Species	Human
Expression Host	HEK293 Cells
Sequence	Met1-Arg221
Accession	Q9BZW8
Calculated Molecular Weight	24.2 kDa
Observed molecular weight	40 kDa
Tag	C-His

Properties

Purity	> 95 % as determined by reducing SDS-PAGE.
Endotoxin	Please contact us for more information.
Storage	Generally, lyophilized proteins are stable for up to 12 months when stored at -20 to -80°C. Reconstituted protein solution can be stored at 4-8°C for 2-7 days. Aliquots of reconstituted samples are stable at < -20°C for 3 months.
Shipping	This product is provided as lyophilized powder which is shipped with ice packs.
Formulation	Lyophilized from sterile PBS, pH 7.4. Normally 5 % - 8 % trehalose, mannitol and 0.01 % Tween80 are added as protectants before lyophilization. Please refer to the specific buffer information in the printed manual.
Reconstitution	Please refer to the printed manual for detailed information.

Data



> 95 % as determined by reducing SDS-PAGE.

Background

The CD244 antigen; also known as 2B4; is a cell surface glycoprotein implicated in the regulation of natural killer and T lymphocyte function. 2B4 is a member of the signaling lymphocyte activation molecule (SLAM)-related receptor family and is important for stimulating NK cell cytotoxicity and cytokine production; which is expressed on all NK cells; a subpopulation of T cells; monocytes and basophils. The 2B4 antigen identified on NK cells and T cells is capable of transmitting stimulatory signals and non-MHC-restricted killing. Reported as an activating receptor; human 2B4 can effectively activate and enhance NK cell-mediated cytotoxicity; induce secretion of IFN- γ and matrix metalloproteinases (MMPs); as well as NK cell invasiveness. As a cell surface glycoprotein of the Ig-superfamily structurally related to

For Research Use Only

A Reliable Research Partner in Life Science and Medicine

Toll-free: 1-888-852-8623

Web: www.elabscience.com

Tel: 1-832-243-6086

Email: techsupport@elabscience.com

Fax: 1-832-243-6017

Recombinant Human 2B4/CD244 protein (His tag)

Catalog Number:PDMH100145



CD2-like molecules such as CD2; CD48; CD58; CD84; Ly-9; and SLAM; 2B4 (CD244) is expressed on all human NK cells; a subpopulation of T cells; basophils and monocytes. 2B4 activates NK cell mediated cytotoxicity; induces secretion of IFN-gamma and matrix metalloproteinases; and NK cell invasiveness.

For Research Use Only

A Reliable Research Partner in Life Science and Medicine

Toll-free: 1-888-852-8623

Web: www.elabscience.com

Tel: 1-832-243-6086

Email: techsupport@elabscience.com

Fax: 1-832-243-6017