

Recombinant Human EPDR1 Protein (His Tag)

Catalog Number:PKSH032733



Note: Centrifuge before opening to ensure complete recovery of vial contents.

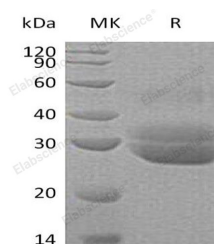
Description

Synonyms	Mammalian ependymin-related protein 1;EPDR1;Upregulated in colorectal cancer gene 1 protein;MERP1
Species	Human
Expression Host	HEK293 Cells
Sequence	Ala38-Ser223
Accession	Q9UM22
Calculated Molecular Weight	22.6 kDa
Observed molecular weight	28 & 33 kDa
Tag	C-His

Properties

Purity	> 95 % as determined by reducing SDS-PAGE.
Endotoxin	< 1.0 EU per µg of the protein as determined by the LAL method.
Storage	Generally, lyophilized proteins are stable for up to 12 months when stored at -20 to -80°C. Reconstituted protein solution can be stored at 4-8°C for 2-7 days. Aliquots of reconstituted samples are stable at < -20°C for 3 months.
Shipping	This product is provided as lyophilized powder which is shipped with ice packs.
Formulation	Lyophilized from a 0.2 µm filtered solution of PBS, pH 7.4. Normally 5 % - 8 % trehalose, mannitol and 0.01% Tween80 are added as protectants before lyophilization. Please refer to the specific buffer information in the printed manual.
Reconstitution	Please refer to the printed manual for detailed information.

Data



> 95 % as determined by reducing SDS-PAGE.

Background

EPDR1 is a member of the ependymin family. EPDR1 is a type II transmembrane protein that is similar to two families of cell adhesion molecules, the protocadherins and ependymins. It may play a role in calcium-dependent cell adhesion. EPDR1 is glycosylated, and the orthologous mouse protein is localized to the lysosome. Alternative splicing results in multiple transcript variants. A related pseudogene has been identified on chromosome 8.

For Research Use Only

A Reliable Research Partner in Life Science and Medicine

Toll-free: 1-888-852-8623

Web: www.elabscience.com

Tel: 1-832-243-6086

Email: techsupport@elabscience.com

Fax: 1-832-243-6017