

Recombinant Cdc23 Monoclonal Antibody

catalog number: **AN301810L**

Note: Centrifuge before opening to ensure complete recovery of vial contents.

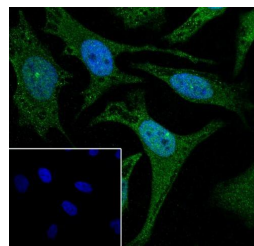
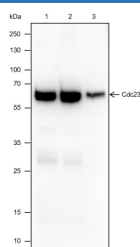
Description

Reactivity	Human;Mouse
Immunogen	Recombinant human Cdc23 fragment
Host	Rabbit
Isotype	IgG, κ
Clone	A522
Purification	Protein A purified
Buffer	PBS, 50% glycerol, 0.05% Proclin 300, 0.05% protein protectant.

Applications

Applications	Recommended Dilution
WB	1:500-1:1000
IF	1:50

Data



Western Blot with Cdc23 Monoclonal Antibody at dilution of 1:1000. Lane 1: HeLa, Lane 2: K-562, Lane 3: Mouse lung Immunofluorescent analysis of (4% Paraformaldehyde) fixed HeLa cells using anti-Cdc23 Monoclonal Antibody at dilution of 1:50.

Observed-MW:69 kDa
Calculated-MW:69 kDa

Preparation & Storage

Storage	Store at -20°C Valid for 12 months. Avoid freeze / thaw cycles.
Shipping	Ice bag

Background

CDC23, also known as APC8, is a component of the tetratricopeptide repeat (TPR) APC/C sub-complex that also includes APC3 (CDC27) and APC6 (CDC16). APC8 protein associates with APC3 and APC6 to facilitate the recruitment of the APC/C coactivation subunits CDC20 and Cdh1/FZR1. APC8 protein is overexpressed in papillary thyroid cancer and acts as an important regulator of cell cycle progression and cell growth.

For Research Use Only

Toll-free: 1-888-852-8623
Web: www.elabscience.com

Tel: 1-832-243-6086
Email: techsupport@elabscience.com

Fax: 1-832-243-6017

Rev. V1.1