

KIF16B Polyclonal Antibody

Catalog Number:E-AB-90129



Note: Centrifuge before opening to ensure complete recovery of vial contents.

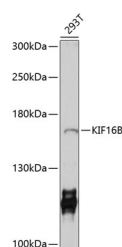
Description

Reactivity	Human
Immunogen	Recombinant fusion protein of human KIF16B
Host	Rabbit
Isotype	IgG
Purification	Affinity purification
Conjugation	Unconjugated
Formulation	PBS with 0.02% sodium azide,50% glycerol,pH7.3.

Applications Recommended Dilution

WB	1:200-1:2000
-----------	--------------

Data



Western blot analysis of extracts of 293T cells using KIF16B Polyclonal Antibody at 1:1000 dilution.

Observed MW:160kDa

Calculated

Mw:132kDa/147kDa/148kDa/152kDa/159kDa

Preparation & Storage

Storage	Store at -20°C. Avoid freeze/thaw cycles.
----------------	---

Background

The protein encoded by this gene is a kinesin-like protein that may be involved in intracellular trafficking. Three transcript variants encoding different isoforms have been found for this gene.

For Research Use Only

A Reliable Research Partner in Life Science and Medicine

Toll-free: 1-888-852-8623

Web: www.elabscience.com

Tel: 1-832-243-6086

Email: techsupport@elabscience.com

Fax: 1-832-243-6017