

# ATG5 Monoclonal Antibody

Catalog Number: E-AB-22149 1 Publications



**Note:** Centrifuge before opening to ensure complete recovery of vial contents.

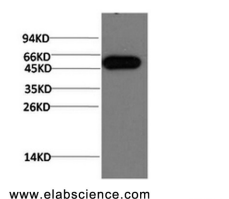
## Description

<b>Reactivity</b>	Human, Mouse, Rat
<b>Immunogen</b>	Recombinant Protein of ATG5
<b>Host</b>	Mouse
<b>Isotype</b>	IgG
<b>Clone</b>	Clone: 5D3
<b>Purification</b>	Protein A purification
<b>Conjugation</b>	Unconjugated
<b>Formulation</b>	PBS with 0.02% sodium azide and 50% glycerol pH 7.4.

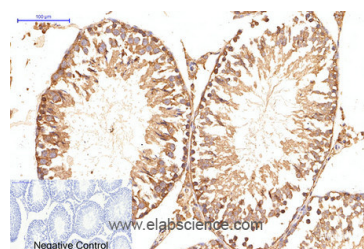
## Applications Recommended Dilution

<b>WB</b>	1:500-2000
<b>IHC</b>	1:50-300

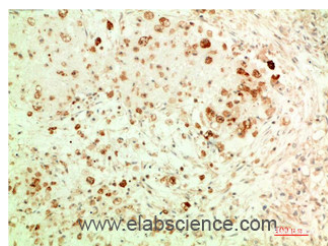
## Data



Western Blot analysis of Hela cells using ATG5 Monoclonal Antibody at dilution of 1:1000.  
**Observed Mw: 55kDa**



Immunohistochemistry of paraffin-embedded Rat testis tissue using ATG5 Monoclonal Antibody at dilution of 1:200.



Immunohistochemistry of paraffin-embedded Human ovarian carcinoma tissue using ATG5 Monoclonal Antibody at dilution of 1:200.

## Preparation & Storage

**Storage** Store at -20°C. Avoid freeze / thaw cycles.

## Background

Autophagy protein 5 is a protein that in humans is encoded by the ATG5 gene. It is an E3 ubiquitin ligase which is necessary for autophagy due to its role in autophagosome elongation. It is activated by ATG7 and forms a complex with

## For Research Use Only

A Reliable Research Partner in Life Science and Medicine

Toll-free: 1-888-852-8623

Web: [www.elabscience.com](http://www.elabscience.com)

Tel: 1-832-243-6086

Email: [techsupport@elabscience.com](mailto:techsupport@elabscience.com)

Fax: 1-832-243-6017

# ATG5 Monoclonal Antibody

Catalog Number: E-AB-22149 1 Publications



ATG12 and ATG16L1. This complex is necessary for LC3-1 conjugation to PE to form LC3-II.

---

## For Research Use Only

A Reliable Research Partner in Life Science and Medicine

Toll-free: 1-888-852-8623

Tel: 1-832-243-6086

Fax: 1-832-243-6017

Web: [www.elabscience.com](http://www.elabscience.com)

Email: [techsupport@elabscience.com](mailto:techsupport@elabscience.com)