

# GNA12 Polyclonal Antibody

Catalog Number: E-AB-90662



**Note:** Centrifuge before opening to ensure complete recovery of vial contents.

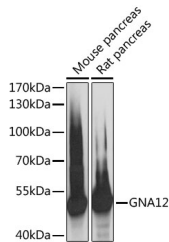
## Description

<b>Reactivity</b>	Human, Mouse, Rat
<b>Immunogen</b>	Recombinant fusion protein of human GNA12
<b>Host</b>	Rabbit
<b>Isotype</b>	IgG
<b>Purification</b>	Affinity purification
<b>Conjugation</b>	Unconjugated
<b>Formulation</b>	PBS with 0.01% thiomersal, 50% glycerol, pH 7.3.

## Applications Recommended Dilution

<b>WB</b>	1:500-1:2000
-----------	--------------

## Data



Western blot analysis of extracts of various cell lines using GNA12 Polyclonal Antibody at 1:3000 dilution.

**Observed Mw: 44kDa**

**Calculated Mw: 34kDa/37kDa/44kDa**

## Preparation & Storage

**Storage** Store at -20°C. Avoid freeze/thaw cycles.

## Background

Guanine nucleotide-binding proteins (G proteins) are involved as modulators or transducers in various transmembrane signaling systems. Activates effector molecule RhoA by binding and activating RhoGEFs (ARHGEF12/LARG). GNA12-dependent Rho signaling subsequently regulates transcription factor AP-1 (activating protein-1) (By similarity). GNA12-dependent Rho signaling also regulates protein phosphatase 2A activation causing dephosphorylation of its target proteins. Promotes tumor cell invasion and metastasis by activating RhoA/ROCK signaling pathway and up-regulating proinflammatory cytokine production. Inhibits CDH1-mediated cell adhesion in process independent from Rho activation. Together with NAPA promotes CDH5 localization to plasma membrane. May play a role in the control of cell migration through the TOR signaling cascade.

## For Research Use Only

A Reliable Research Partner in Life Science and Medicine

Toll-free: 1-888-852-8623

Web: [www.elabscience.com](http://www.elabscience.com)

Tel: 1-832-243-6086

Email: [techsupport@elabscience.com](mailto:techsupport@elabscience.com)

Fax: 1-832-243-6017