

## Recombinant MIF Monoclonal Antibody

catalog number: **AN300943L**

**Note:** Centrifuge before opening to ensure complete recovery of vial contents.

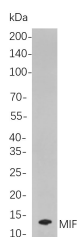
### Description

|                     |   |
|---------------------|---|
| <b>Reactivity</b>   | Human;Mouse;Rat   |
| <b>Immunogen</b>    | Recombinant Human MIF protein                                   |
| <b>Host</b>         | Rabbit  |
| <b>Isotype</b>      | IgG, $\kappa$   |
| <b>Clone</b>        | 3F8   |
| <b>Purification</b> | Protein A   |
| <b>Buffer</b>       | PBS, 50% glycerol, 0.05% Proclin 300, 0.05% protein protectant. |

### Applications Recommended Dilution

|           |               |
|-----------|---------------|
| <b>WB</b> | 1:1000-1:5000 |
|-----------|---------------|

### Data



Western Blot with Recombinant MIF Monoclonal Antibody at dilution of 1:1000 dilution. Lane A: C6 cells.

**Observed-MW:13 kDa**

**Calculated-MW:13 kDa**

### Preparation & Storage

|                 |   |
|-----------------|---|
| <b>Storage</b>  | Store at -20°C Valid for 12 months. Avoid freeze / thaw cycles. |
| <b>Shipping</b> | Ice bag   |

### Background

This gene encodes a lymphokine involved in cell-mediated immunity, immunoregulation, and inflammation. It plays a role in the regulation of macrophage function in host defense through the suppression of anti-inflammatory effects of glucocorticoids. This lymphokine and the JAB1 protein form a complex in the cytosol near the peripheral plasma membrane, which may indicate an additional role in integrin signaling pathways.

### For Research Use Only

Toll-free: 1-888-852-8623  
Web: [www.elabscience.com](http://www.elabscience.com)

Tel: 1-832-243-6086  
Email: [techsupport@elabscience.com](mailto:techsupport@elabscience.com)

Fax: 1-832-243-6017

Rev. V1.0