

Recombinant Mouse GP6/GPVI (C-6His)

Catalog Number:PKSM041437



Note: Centrifuge before opening to ensure complete recovery of vial contents.

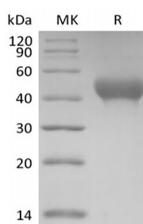
Description

Synonyms	Glycoprotein 6;glycoprotein VI (platelet);GP6;GPIV;GPVI;GPVIplatelet collagen receptor;MGC138168;platelet glycoprotein VI
Species	Mouse
Expression Host	HEK293 Cells
Sequence	Gln22-Lys265
Accession	B2RR15
Calculated Molecular Weight	27.8 kDa
Observed molecular weight	40-60 kDa
Tag	C-His

Properties

Purity	> 95 % as determined by reducing SDS-PAGE.
Endotoxin	< 1.0 EU per µg of the protein as determined by the LAL method.
Storage	Generally, lyophilized proteins are stable for up to 12 months when stored at -20 to -80°C. Reconstituted protein solution can be stored at 4-8°C for 2-7 days. Aliquots of reconstituted samples are stable at < -20°C for 3 months.
Shipping	This product is provided as lyophilized powder which is shipped with ice packs.
Formulation	Lyophilized from a 0.2 µm filtered solution of PBS, pH 7.4. Normally 5 % - 8 % trehalose, mannitol and 0.01% Tween80 are added as protectants before lyophilization. Please refer to the specific buffer information in the printed manual.
Reconstitution	Please refer to the printed manual for detailed information.

Data



> 95 % as determined by reducing SDS-PAGE.

Background

Glycoprotein VI (GPVI) is a 63 kDa platelet/megakaryocyte-specific type I transmembrane glycoprotein of the immunoglobulin superfamily that is an important collagen receptor and initiator of platelet activation, aggregation and thrombin generation. GPVI is also a secondary receptor required for platelet spreading on laminin. GPVI associates with the Fc receptor gamma -chain via charged aa in the TM domains of GPVI (arginine) and the FcR gamma (aspartic acid). Collagen binding by the GPVI Ig-like domains initiates signaling through the FcR gamma ITAM sequence. Dimerization of GPVI (2:2 with FcR gamma) and N-glycosylation greatly enhances collagen binding. Type I and III collagens are strong thrombus-forming components in the vascular subendothelium and atherosclerotic plaques. GPVI initiates binding

For Research Use Only

A Reliable Research Partner in Life Science and Medicine

Toll-free: 1-888-852-8623

Web: www.elabscience.com

Tel: 1-832-243-6086

Email: techsupport@elabscience.com

Fax: 1-832-243-6017

Recombinant Mouse GP6/GPVI (C-6His)

Catalog Number:PKSM041437



to fibrillar collagens under flow conditions, then activates integrin alpha 2 beta 1 which binds collagen more tightly. GPVI deficiencies cause only a mild bleeding tendency, probably because integrin alpha 2 beta 1 is able to minimally initiate collagen binding. Normal human GPVI concentration can vary widely and affect maximum thrombin generation. Engagement of GPVI by collagens or other agonists, including autoantibodies, causes calmodulin-regulated metalloproteinase cleavage of the 57 kDa ECD and depletes surface GPVI.

For Research Use Only

A Reliable Research Partner in Life Science and Medicine

Toll-free: 1-888-852-8623

Tel: 1-832-243-6086

Fax: 1-832-243-6017

Web: www.elabscience.com

Email: techsupport@elabscience.com