

ERCC1 Polyclonal Antibody

Catalog Number:E-AB-19768



Note: Centrifuge before opening to ensure complete recovery of vial contents.

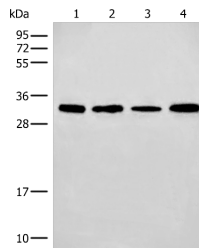
Description

| | |
|---------------------|--|
| Reactivity | Human, Mouse |
| Immunogen | Synthetic peptide of human ERCC1 |
| Host | Rabbit |
| Isotype | IgG |
| Purification | Antigen affinity purification |
| Conjugation | Unconjugated |
| Formulation | PBS with 0.05% NaN ₃ and 40% Glycerol,pH7.4 |

Applications Recommended Dilution

| | |
|--------------|----------------|
| WB | 1:500-1:2000 |
| ELISA | 1:5000-1:10000 |

Data



Western blot analysis of 293T and NIH/3T3 cell
Mouse liver tissue lysates using ERCC1 Polyclonal
Antibody at dilution of 1:600
Observed MW:Refer to figures
Calculated Mw:33 kDa

Preparation & Storage

Storage Store at -20°C. Avoid freeze / thaw cycles.

Background

Excision Repair Cross Complementing 1 (ERCC1) is a structure-specific endonuclease that is responsible for the 5'-incision during DNA repair. It forms a complex with ERCC11,XPF and ERCC4,which are required in both recombinatorial repair and nucleotide excision repair. It has been found that ERCC1,together with RRM1,are determinants of survival after surgical treatment of early-stage,non-small-cell lung cancer. (Ref: Simon,ER. 2005)

For Research Use Only

A Reliable Research Partner in Life Science and Medicine

Toll-free: 1-888-852-8623

Web: www.elabscience.com

Tel: 1-832-243-6086

Email: techsupport@elabscience.com

Fax: 1-832-243-6017