

SPIC Polyclonal Antibody

Catalog Number: E-AB-18438



Note: Centrifuge before opening to ensure complete recovery of vial contents.

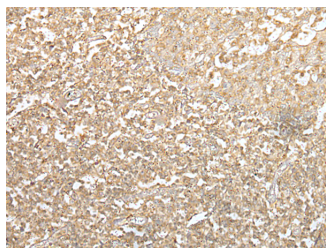
Description

| | |
|---------------------|---|
| Reactivity | Human |
| Immunogen | Full length fusion protein |
| Host | Rabbit |
| Isotype | IgG |
| Purification | Antigen affinity purification |
| Conjugation | Unconjugated |
| Formulation | PBS with 0.05% NaN ₃ and 40% Glycerol, pH7.4 |

Applications Recommended Dilution

| | |
|--------------|----------------|
| IHC | 1:40-1:250 |
| ELISA | 1:5000-1:10000 |

Data



Immunohistochemistry of paraffin-embedded Human tonsil tissue using SPIC Polyclonal Antibody at dilution of 1:55(×200)

Preparation & Storage

Storage Store at -20°C. Avoid freeze / thaw cycles.

Background

The protein encoded by this gene regulates the development of red pulp macrophages, which are necessary for iron homeostasis and the recycling of red blood cells.

For Research Use Only

A Reliable Research Partner in Life Science and Medicine

Toll-free: 1-888-852-8623

Web: www.elabscience.com

Tel: 1-832-243-6086

Email: techsupport@elabscience.com

Fax: 1-832-243-6017