

PE Anti-Human CD20 Antibody[Rituximab]

Catalog Number: AN00776D

Note: Centrifuge before opening to ensure complete recovery of vial contents.

Description

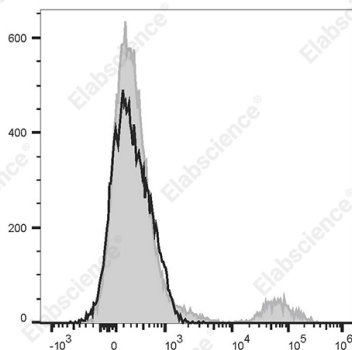
| | |
|--------------------------------|---|
| Reactivity | Human |
| Host | Human |
| Isotype | Human IgG1, κ |
| Clone No. | Rituximab |
| Isotype Control | PE Anti-Human IgG1 Isotype Control Antibody[MOPC21.1] [Product AN00840D] |
| Conjugation | PE |
| Conjugation Information | PE is designed to be excited by the Blue (488 nm), Green (532 nm) and Yellow-Green (561 nm) lasers and detected using an optical filter centered near 575 nm (e.g., a 585/42 nm bandpass filter). |
| Storage Buffer | Phosphate buffered solution, pH 7.2, containing 0.09% stabilizer. |

Applications

Recommended usage

| | |
|------------|--|
| FCM | Each lot of this antibody is quality control tested by flow cytometric analysis. The amount of the reagent is suggested to be used 5 μL of antibody per test (million cells in 100 μL staining volume or per 100 μL of whole blood). Please check your vial before the experiment. Since applications vary, the appropriate dilutions must be determined for individual use. |
|------------|--|

Data



Human peripheral blood lymphocytes are stained with PE Anti-Human CD20 Antibody[Rituximab] (filled gray histogram). Unstained lymphocytes (empty black histogram) are used as control.

Preparation & Storage

| | |
|-----------------|---|
| Storage | Keep as concentrated solution. This product can be stored at 2-8°C for 24 months. Please protected from prolonged exposure to light and do not freeze. |
| Shipping | Ice bag |

Antigen Information

| | |
|------------------------|-------------------------------|
| Alternate Names | B1;Bp35;LEU-16;MS4A1;AN007760 |
| Uniprot ID | P11836 |
| Gene ID | 931 |

For Research Use Only

Background

CD20 is expressed on pre-B-cells, naive and activated B cells, memory B cells, and at lower levels on a small subset of T cells but is absent from plasmablasts and plasma cells. It is also expressed on most malignant B cells and CD20-positive T-cell lymphomas. CD20 functions in mediating calcium transport and B cell activation, differentiation, and survival.