

Recombinant TATA Box Binding Protein Monoclonal Antibody

catalog number: **AN301051L**

Note: Centrifuge before opening to ensure complete recovery of vial contents.

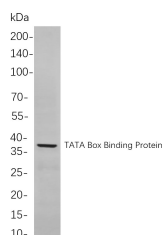
Description

Reactivity	Human;Mouse;Rat
Immunogen	Recombinant Human TATA Box Binding Protein protein
Host	Rabbit
Isotype	IgG, κ
Clone	B806
Purification	Protein A
Buffer	PBS, 50% glycerol, 0.05% Proclin 300, 0.05% protein protectant.

Applications

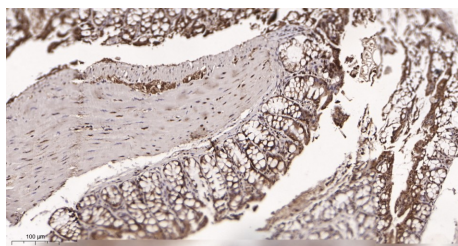
Applications	Recommended Dilution
IHC	1:400-1000
WB	1:1000-5000
IF	1:200-1000
ELISA	1:5000-20000
IP	1:50-200

Data

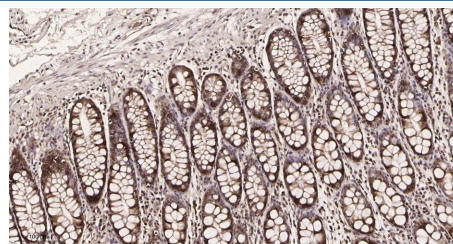


Western Blot with Recombinant TATA Box Binding Protein Monoclonal Antibody at dilution of 1:1000 dilution. Lane A: HEK293 cells.

Observed-MW:38 kDa
Calculated-MW:38 kDa



Immunohistochemistry of paraffin-embedded mouse colon tissue using Recombinant TATA Box Binding Protein Monoclonal Antibody at dilution of 1:200.



Immunohistochemistry of paraffin-embedded human colon carcinoma tissue using Recombinant TATA Box Binding Protein Monoclonal Antibody at dilution of 1:200.

Preparation & Storage

Storage	Store at -20°C Valid for 12 months. Avoid freeze / thaw cycles.
Shipping	Ice bag

Background

For Research Use Only

Toll-free: 1-888-852-8623
Web: www.elabscience.com

Tel: 1-832-243-6086
Email: techsupport@elabscience.com

Fax: 1-832-243-6017

Rev. V1.2

Initiation of transcription by RNA polymerase II requires the activities of more than 70 polypeptides. The protein that coordinates these activities is transcription factor IID (TFIID), which binds to the core promoter to position the polymerase properly, serves as the scaffold for assembly of the remainder of the transcription complex, and acts as a channel for regulatory signals. TFIID is composed of the TATA-binding protein (TBP) and a group of evolutionarily conserved proteins known as TBP-associated factors or TAFs. TAFs may participate in basal transcription, serve as coactivators, function in promoter recognition or modify general transcription factors (GTFs) to facilitate complex assembly and transcription initiation. This gene encodes TBP, the TATA-binding protein. A distinctive feature of TBP is a long string of glutamines in the N-terminus.