

Recombinant 4E-BP1/EIF4EBP1 Monoclonal Antibody

catalog number: AN300047P

Note: Centrifuge before opening to ensure complete recovery of vial contents.

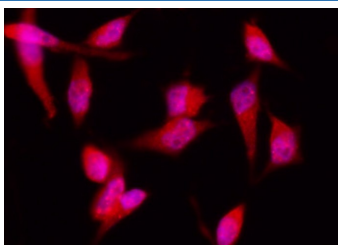
Description

Reactivity	Human
Immunogen	Recombinant Human 4E-BP1 / EIF4EBP1 protein
Host	Rabbit
Isotype	IgG
Clone	A1157
Purification	Protein A
Buffer	0.2 µm filtered solution in PBS

Applications Recommended Dilution

ICC/IF	1:20-1:100
---------------	------------

Data



Immunofluorescence analysis of Human 4EBP1 in HeLa cells. Cells were fixed with 4% PFA, permeabilized with 0.3% Triton X-100 in PBS, blocked with 10% serum, and incubated with rabbit anti-Human 4EBP1 Monoclonal Antibody (1:60) at 37°C 1 hour. Then cells were stained with the Alexa Fluor® 594-conjugated Goat Anti-rabbit IgG secondary antibody (red) and counterstained with DAPI for nuclear staining (blue). Positive staining was localized to nucleus and cytoplasm.

Preparation & Storage

Storage	This antibody can be stored at 2°C-8°C for one month without detectable loss of activity. Antibody products are stable for twelve months from date of receipt when stored at -20°C to -80°C. Preservative-Free. Avoid repeated freeze-thaw cycles.
Shipping	Ice bag

Background

This gene encodes one member of a family of translation repressor proteins. The protein directly interacts with eukaryotic translation initiation factor 4E (eIF4E), which is a limiting component of the multisubunit complex that recruits 40S ribosomal subunits to the 5' end of mRNAs. Interaction of this protein with eIF4E inhibits complex assembly and represses translation. This protein is phosphorylated in response to various signals including UV irradiation and insulin signaling, resulting in its dissociation from eIF4E and activation of mRNA translation.

For Research Use Only