

## Elab Fluor® 488 Anti-Human TCR Vβ7.1 Antibody[ZOE5.1]

Catalog Number: AN00370L

Note: Centrifuge before opening to ensure complete recovery of vial contents.

### Description

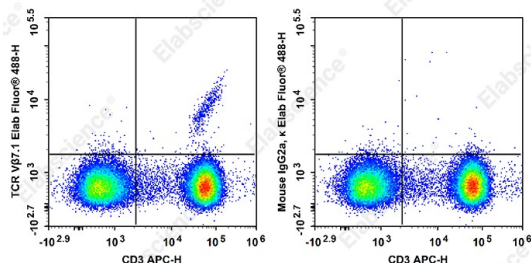
Reactivity	Human
Host	Mouse
Isotype	Mouse IgG2a, κ
Clone No.	ZOE5.1
Isotype Control	Elab Fluor® 488 Mouse IgG2a, κ Isotype Control[C1.18.4] [Product E-AB-F09802L]
Conjugation	Elab Fluor® 488
Conjugation Information	Elab Fluor® 488 is designed to be excited by the Blue laser (488 nm) and detected using an optical filter centered near 520 nm (e.g., a 525/40 nm bandpass filter).
Storage Buffer	Phosphate buffered solution, pH 7.2, containing 0.09% stabilizer.

### Applications

### Recommended usage

FCM	Each lot of this antibody is quality control tested by flow cytometric analysis. <b>The amount of the reagent is suggested to be used 5 μL of antibody per test (million cells in 100 μL staining volume or per 100 μL of whole blood).</b> Please check your vial before the experiment. Since applications vary, the appropriate dilutions must be determined for individual use.
-----	---

### Data



Staining of normal human peripheral blood cells with APC Anti-Human CD3 Antibody[OKT-3] and Elab Fluor® 488 Anti-Human TCR Vβ7.1 Antibody[ZOE5.1] (left) or Elab Fluor® 488 Mouse IgG2a, κ Isotype Control (right). Cells in the lymphocytes gate were used for analysis.

### Preparation & Storage

Storage	Keep as concentrated solution. This product can be stored at 2-8°C for 24 months. Please protected from prolonged exposure to light and do not freeze.
Shipping	Ice bag

### Antigen Information

Alternate Names	TCR Vb7.1;TCR V beta 7.1;TCRBV7S1;ZOE
Uniprot ID	0

### For Research Use Only

## Background

The V $\beta$ 7.1 TCR is a variant of the TCR  $\beta$  chain. It belongs to the Ig superfamily and is expressed by a subset of peripheral blood T cells and some T cell clones.