

Recombinant Doublecortin Monoclonal Antibody

catalog number: **AN301300L**

Note: *Centrifuge before opening to ensure complete recovery of vial contents.*

Description

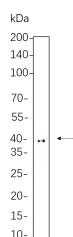
Reactivity	Human;Mouse;Rat
Immunogen	Recombinant Human Doublecortin protein
Host	Rabbit
Isotype	IgG, κ
Clone	B1063
Purification	Protein A
Buffer	PBS, 50% glycerol, 0.05% Proclin 300, 0.05% protein protectant.

Applications

Recommended Dilution

IHC	1:50-1:200
WB	1:2000-1:10000
IF	1:200-1:1000
ELISA	1:5000-1:20000

Data



Western Blot with Recombinant Doublecortin Monoclonal Antibody at dilution of 1:1000 dilution. Lane A: SH-SY5Y cell lysate.

Observed-MW:41 kDa

Calculated-MW:41 kDa

Preparation & Storage

Storage	Store at -20°C Valid for 12 months. Avoid freeze / thaw cycles.
Shipping	Ice bag

Background

This gene encodes a member of the doublecortin family. The protein encoded by this gene is a cytoplasmic protein and contains two doublecortin domains, which bind microtubules. In the developing cortex, cortical neurons must migrate over long distances to reach the site of their final differentiation. The encoded protein appears to direct neuronal migration by regulating the organization and stability of microtubules. In addition, the encoded protein interacts with LIS1, the regulatory gamma subunit of platelet activating factor acetylhydrolase, and this interaction is important to proper microtubule function in the developing cortex. Mutations in this gene cause abnormal migration of neurons during development and disrupt the layering of the cortex, leading to epilepsy, mental retardation, subcortical band heterotopia ("double cortex" syndrome) in females and lissencephaly.

For Research Use Only