

CD21 Monoclonal Antibody

catalog number: AN200013P

Note: *Centrifuge before opening to ensure complete recovery of vial contents.*

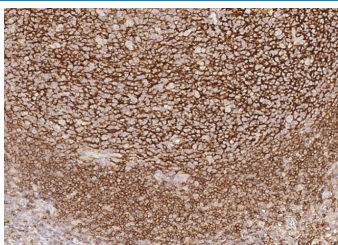
Description

Reactivity	Human;Cynomolgus;Ferret
Immunogen	Recombinant Human CD21 Protein
Host	Mouse
Isotype	IgG1
Clone	A857
Purification	Protein A
Buffer	0.2 µm filtered solution in PBS

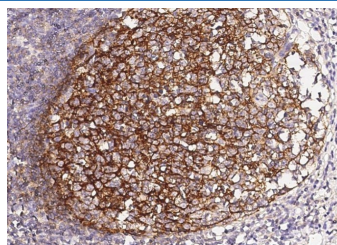
Applications Recommended Dilution

IHC-P	1:30-1:1000
--------------	-------------

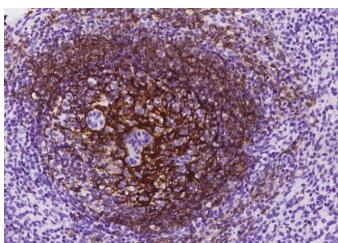
Data



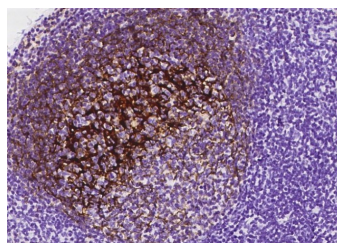
Immunohistochemistry of paraffin-embedded human tonsil using CD21 Monoclonal Antibody at dilution of 1:60.



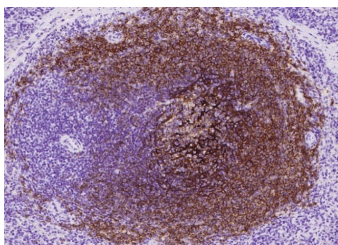
Immunohistochemistry of paraffin-embedded human appendix using CD21 Monoclonal Antibody at dilution of 1:60.



Immunohistochemistry of paraffin-embedded cynomolgus spleen using CD21 Monoclonal Antibody at dilution of 1:1000.



Immunohistochemistry of paraffin-embedded cynomolgus lymph node using CD21 Monoclonal Antibody at dilution of 1:1000.



Immunohistochemistry of paraffin-embedded Ferret spleen using CD21 Monoclonal Antibody at dilution of 1:1000.

Preparation & Storage

Storage	This antibody can be stored at 2°C-8°C for one month without detectable loss of activity. Antibody products are stable for twelve months from date of receipt when stored at -20°C to -80°C. Preservative-Free. Avoid repeated freeze-thaw cycles.
----------------	--

For Research Use Only

Toll-free: 1-888-852-8623
Web: www.elabscience.com

Tel: 1-832-243-6086
Email: techsupport@elabscience.com

Fax: 1-832-243-6017

Rev. V1.2

Shipping

Ice bag

Background

CD21 is a 145 kD transmembrane protein also known as complement C3d receptor (C3dR), complement receptor 2 (CR2), and Epstein-Barr virus receptor. CD21 is expressed on B cells, follicular dendritic cells, subsets of normal thymocytes and T cells, and some epithelial cells. CD21 is the receptor used by Epstein-Barr virus to infect B cells and is also the complement receptor for C3d. CD21 has also been shown to interact with a number of proteins, including CD23, CD19, annexin VI, CD81, iC3b, complement receptor 1 (CR1, CD35), and interferon-alpha 1 (IFN- α 1).

For Research Use Only

Toll-free: 1-888-852-8623

Web: www.elabscience.com

Tel: 1-832-243-6086

Email: techsupport@elabscience.com

Fax: 1-832-243-6017

Rev. V1.2