

PE Anti-Rat CD8b Antibody[341]

Catalog Number: AN00667D

Note: Centrifuge before opening to ensure complete recovery of vial contents.

Description

Reactivity	Rat
Host	Mouse
Isotype	Mouse IgG1, κ
Clone No.	341
Isotype Control	PE Mouse IgG1, κ Isotype Control[MOPC-21] [Product E-AB-F09792D]
Conjugation	PE
Conjugation Information	PE is designed to be excited by the Blue (488 nm), Green (532 nm) and Yellow-Green (561 nm) lasers and detected using an optical filter centered near 575 nm (e.g., a 585/42 nm bandpass filter).
Storage Buffer	Phosphate buffered solution, pH 7.2, containing 0.09% stabilizer.

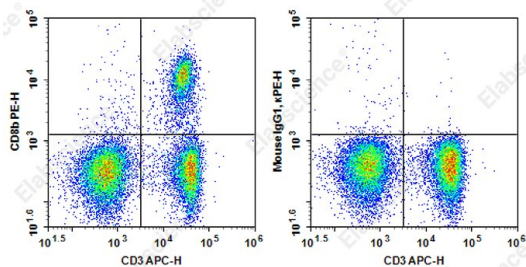
Applications

Recommended usage

FCM

Each lot of this antibody is quality control tested by flow cytometric analysis. **The amount of the reagent is suggested to be used 5 μL of antibody per test (million cells in 100 μL staining volume or per 100 μL of whole blood).** Please check your vial before the experiment. Since applications vary, the appropriate dilutions must be determined for individual use.

Data



Staining of Rat splenocytes cells with APC Anti-Human CD3 Antibody and PE Anti-Rat CD8b Antibody[341] (left) or PE Mouse IgG1, κ Isotype Control (right). Total viable cells were used for analysis.

Preparation & Storage

Storage	Keep as concentrated solution. This product can be stored at 2-8°C for 24 months. Please protected from prolonged exposure to light and do not freeze.
Shipping	Ice bag

Antigen Information

Alternate Names	CD8;Lyt3
Uniprot ID	P05541
Gene ID	24931

For Research Use Only

Background

CD8b antigen is also known as T8, Lyt2, Ly-2, and CD8 β . It is a member of the immunoglobulin superfamily expressed on most thymocytes, some mature T cell subsets, and macrophages. CD8b forms heterodimers with the CD8 α chain (CD8a). CD8 is an antigen co-receptor on T cells that interacts with MHC class I on antigen-presenting cells or epithelial cells. CD8 participates in T cell activation through its association with the T cell receptor complex and protein tyrosine kinase lck (p56lck).