

Recombinant CD3 epsilon Monoclonal Antibody

catalog number: **AN301417L**

Note: Centrifuge before opening to ensure complete recovery of vial contents.

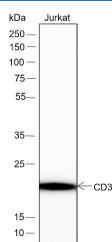
Description

Reactivity	Human;Rat;Mouse
Immunogen	Recombinant human CD3 epsilon fragment
Host	Rabbit
Isotype	IgG, κ
Clone	A112
Purification	Protein A purified
Buffer	PBS, 50% glycerol, 0.05% Proclin 300, 0.05% protein protectant.

Applications Recommended Dilution

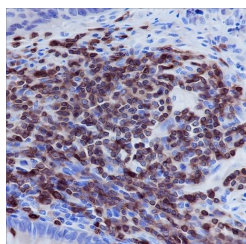
WB	1:1000-1:5000
IHC	1:500-1:1200
mIHC	1:200-1:1000
FCM	1:50-1:100
IP	1:50-1:100

Data

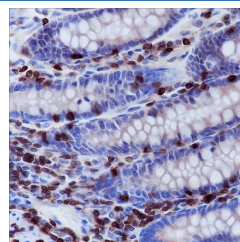
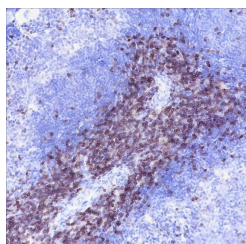


Western Blot with CD3 epsilon Monoclonal Antibody at dilution of 1:5000. Lane 1: Jurkat

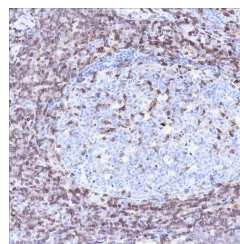
Observed-MW:23 kDa
Calculated-MW:23 kDa



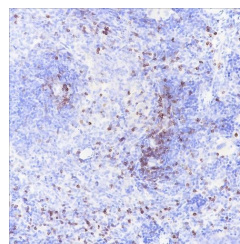
Immunohistochemistry of paraffin-embedded Human colon cancer using CD3 epsilon Monoclonal Antibody at dilution of 1:1000.



Immunohistochemistry of paraffin-embedded Human colon using CD3 epsilon Monoclonal Antibody at dilution of 1:1200.



Immunohistochemistry of paraffin-embedded Human tonsil using CD3 epsilon Monoclonal Antibody at dilution of 1:1000.



For Research Use Only

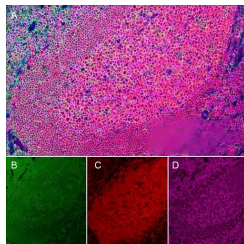
Toll-free: 1-888-852-8623
Web: www.elabscience.com

Tel: 1-832-243-6086
Email: techsupport@elabscience.com

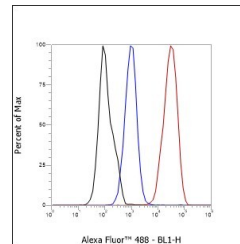
Fax: 1-832-243-6017

Rev. V1.0

Immunohistochemistry of paraffin-embedded Mouse spleen using CD3 epsilon Monoclonal Antibody at dilution of 1:1000.



Immunohistochemistry of paraffin-embedded Rat spleen using CD3 epsilon Monoclonal Antibody at dilution of 1:1000.



Immunohistochemistry of paraffin-embedded Human tonsil using CD3 epsilon Monoclonal Antibody at dilution of 1:500.

Flow cytometric analysis of human CD3 epsilon expression on Jurkat cells. Cells were stained with purified anti-Human CD3 epsilon, then a Alexa Fluor 488-conjugated second step antibody. The histogram were derived from events with the forward and side light-scatter characteristics of intact cells.

Preparation & Storage

Storage Store at -20°C Valid for 12 months. Avoid freeze / thaw cycles.
Shipping Ice bag

Background

Part of the TCR-CD3 complex present on T-lymphocyte cell surface that plays an essential role in adaptive immune response. In absence of a functional TCR-CD3 complex, thymocytes are unable to differentiate properly.

For Research Use Only

Toll-free: 1-888-852-8623
 Web: www.elabscience.com

Tel: 1-832-243-6086
 Email: techsupport@elabscience.com

Fax: 1-832-243-6017

Rev. V1.0