

Recombinant α smooth muscle actin Monoclonal Antibody

catalog number: **AN301012L**

Note: Centrifuge before opening to ensure complete recovery of vial contents.

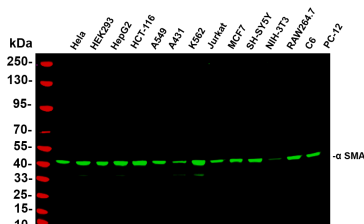
Description

Reactivity	Human;Mouse;Rat
Immunogen	Recombinant Human α smooth muscle actin protein
Host	Rabbit
Isotype	IgG, κ
Clone	B763
Purification	Protein A
Buffer	PBS, 50% glycerol, 0.05% Proclin 300, 0.05% protein protectant.

Applications Recommended Dilution

IHC	1:200-1:1000
WB	1:1000-1:5000
IF	1:200-1:1000
ELISA	1:5000-1:20000
IP	1:50-1:200,

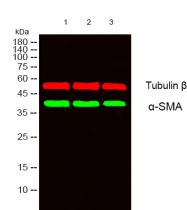
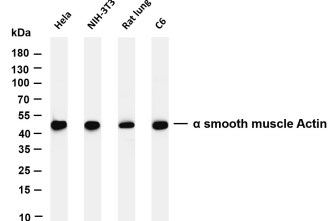
Data



Various whole cell lysates were separated by 4-20% SDS-PAGE, and the primary antibody was used at 4°C, over night with a 1:5000 dilution .The Dylight 800-conjugated Goat anti-Rabbit antibody was used to detect the antibody. Lane1:

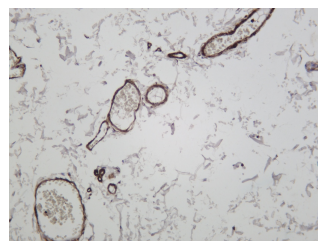
Hela Lane2: HEK293 Lane3: HepG2 Lane4: HCT-116 Lane5: A549 Lane6: A431 Lane7: K562 Lane8: Jurkat Lane9: MCF7 Lane10: SH-SY5Y Lane11: NIH-3T3 Lane12: RAW264.7 Lane13: C6 Lane14: PC-12. Predicted band size:

42kDa Observed band size: 42kDa



Western blot analysis of lysates from 1) Jurkat, 2) K562, 3)HuvEC cells, (Green) primary antibody was diluted at 1:1000, 4°C over night, secondary antibody was diluted at 1:10000, 37°C 1 hour. (Red) Tubulin β Monoclonal Antibody(5G3) antibody was diluted at 1:5000 as loading control, 4°C over night,secondary antibody was diluted at

Observed-MW:42 kDa
Calculated-MW:42 kDa



For Research Use Only

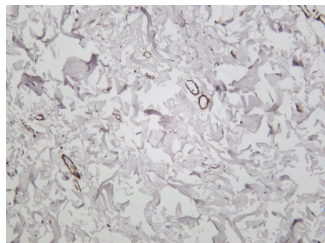
Toll-free: 1-888-852-8623
Web: www.elabscience.com

Tel: 1-832-243-6086
Email: techsupport@elabscience.com

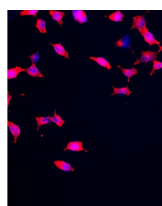
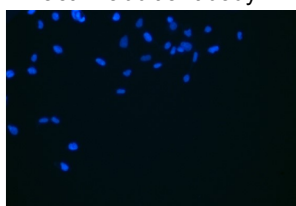
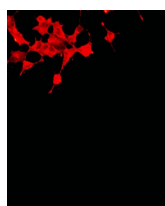
Fax: 1-832-243-6017

Rev. V1.2

Various whole cell lysates were separated by 4-20% SDS-PAGE, and the membrane was blotted with anti- α smooth muscle Actin antibody. The HRP-conjugated Goat anti-Rabbit IgG(H + L) antibody was used to detect the antibody. Lane 1: Hela Lane 2: NIH-3T3 Lane 3: Rat lung Lane 4: C6
Predicted band size: 42kDa Observed band size: 42kDa

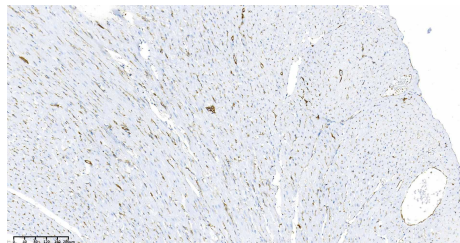


Human stomach was stained with anti- α smooth muscle actin rabbit antibody

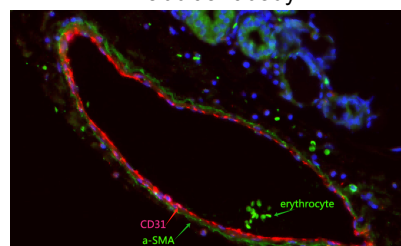


Immunofluorescence analysis of HEK293. Picture A: α smooth muscle Actin antibody (red). Picture B: DAPI (blue). Picture C: Merge of A+B

Human colon was stained with anti- α smooth muscle actin rabbit antibody



Rat heart was stained with anti- α smooth muscle actin Rabbit antibody



Fluorescence multiplex immunohistochemical analysis of normal human blood vessel (formalin-fixed paraffin-embedded section). The section was incubated in 2 rounds of staining; in the order of α -SMA, CD31, each using a separate fluorescent tyramide signal amplification system: Treble-Fluorescence immunohistochemical mouse/rabbit kit (pH9.0)

Preparation & Storage

Storage

Store at -20°C Valid for 12 months. Avoid freeze / thaw cycles.

Shipping

Ice bag

Background

The protein encoded by this gene belongs to the actin family of proteins, which are highly conserved proteins that play a role in cell motility, structure and integrity. Alpha, beta and gamma actin isoforms have been identified, with alpha actins being a major constituent of the contractile apparatus, while beta and gamma actins are involved in the regulation of cell motility. This actin is an alpha actin that is found in skeletal muscle. Defects in this gene cause aortic aneurysm familial thoracic type 6. Multiple alternatively spliced variants, encoding the same protein, have been identified.

For Research Use Only

Toll-free: 1-888-852-8623
Web: www.elabscience.com

Tel: 1-832-243-6086
Email: techsupport@elabscience.com

Fax: 1-832-243-6017

Rev. V1.2