

## Mcl-1 Monoclonal Antibody

**catalog number:** AN200070P

**Note:** Centrifuge before opening to ensure complete recovery of vial contents.

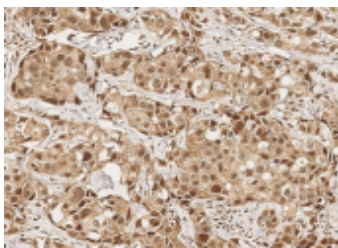
### Description

<b>Reactivity</b>	Human
<b>Immunogen</b>	A synthetic peptide corresponding to the center region of the Human Mcl-1
<b>Host</b>	Mouse
<b>Isotype</b>	IgG1
<b>Clone</b>	4B4
<b>Purification</b>	Protein A
<b>Buffer</b>	0.2 µm filtered solution in PBS

### Applications Recommended Dilution

<b>IHC-P</b>	1:20-1:80
--------------	-----------

### Data



Immunohistochemistry of paraffin-embedded human breast carcinoma using Mcl-1 Monoclonal Antibody at dilution of 1:30.

### Preparation & Storage

<b>Storage</b>	This antibody can be stored at 2°C-8°C for one month without detectable loss of activity. Antibody products are stable for twelve months from date of receipt when stored at -20°C to -80°C. Preservative-Free. Avoid repeated freeze-thaw cycles.
<b>Shipping</b>	Ice bag

### Background

This gene encodes an anti-apoptotic protein, which is a member of the Bcl-2 family. Alternative splicing results in multiple transcript variants. The longest gene product (isoform 1) enhances cell survival by inhibiting apoptosis while the alternatively spliced shorter gene products (isoform 2 and isoform 0) promote apoptosis and are death-inducing.

### For Research Use Only