

POP5 Polyclonal Antibody

catalog number: **E-AB-66843**

Note: Centrifuge before opening to ensure complete recovery of vial contents.

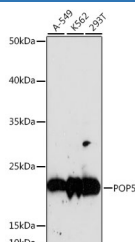
Description

Reactivity	Human;Rat
Immunogen	A synthetic peptide of human POP5 (NP_057002.2).
Host	Rabbit
Isotype	IgG
Purification	Affinity purification
Buffer	Phosphate buffered solution, pH 7.4, containing 0.05% stabilizer and 50% glycerol.

Applications Recommended Dilution

WB	1:500-1:2000
-----------	--------------

Data



Western blot analysis of extracts of various cell lines using POP5 Polyclonal Antibody at dilution of 1:1000.

Observed-MW:19 kDa

Calculated-MW:12 kDa/18 kDa

Preparation & Storage

Storage	Store at -20°C Valid for 12 months. Avoid freeze / thaw cycles.
Shipping	The product is shipped with ice pack, upon receipt, store it immediately at the temperature recommended.

Background

POP5 (POP5 Homolog, Ribonuclease P/MRP Subunit) is a Protein Coding gene. Diseases associated with POP5 include Cartilage-Hair Hypoplasia. Among its related pathways are tRNA processing and Gene Expression. Gene Ontology (GO) annotations related to this gene include ribonuclease activity and ribonuclease P activity.

For Research Use Only