

## SCN10A Polyclonal Antibody

catalog number: E-AB-12862

**Note:** Centrifuge before opening to ensure complete recovery of vial contents.

### Description

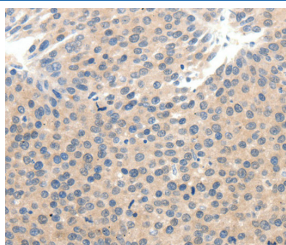
<b>Reactivity</b>	Human
<b>Immunogen</b>	Synthetic peptide of human SCN10A
<b>Host</b>	Rabbit
<b>Isotype</b>	IgG
<b>Purification</b>	Affinity purification
<b>Conjugation</b>	Unconjugated
<b>Buffer</b>	Phosphate buffered solution, pH 7.4, containing 0.05% stabilizer and 50% glycerol.

### Applications

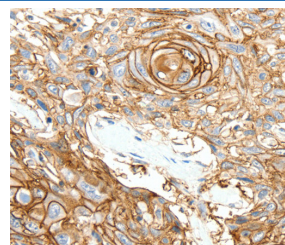
### Recommended Dilution

<b>IHC</b>	1:25-1:100
------------	------------

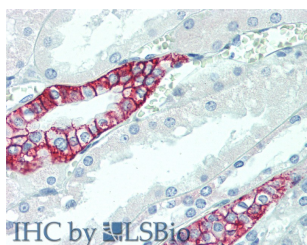
### Data



Immunohistochemistry of paraffin-embedded Human breast cancer tissue using SCN10A Polyclonal Antibody at dilution 1:25



Immunohistochemistry of paraffin-embedded Human esophagus cancer tissue using SCN10A Polyclonal Antibody at dilution 1:25



Immunohistochemistry of paraffin-embedded Kidney tissue using SCN10A Polyclonal Antibody at dilution of 1:100(Elabscience Product Detected by Lifespan).

### Preparation & Storage

<b>Storage</b>	Store at -20°C Valid for 12 months. Avoid freeze / thaw cycles.
<b>Shipping</b>	The product is shipped with ice pack, upon receipt, store it immediately at the temperature recommended.

### Background

The protein encoded by this gene is a tetrodotoxin-resistant voltage-gated sodium channel alpha subunit. The properties of the channel formed by the encoded transmembrane protein can be altered by interaction with different beta subunits. This protein may be involved in the onset of pain associated with peripheral neuropathy.

### For Research Use Only