

## Elab Fluor® 647-conjugated beta Tubulin Monoclonal Antibody

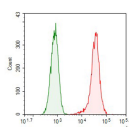
catalog number: AN00293M

**Note:** Centrifuge before opening to ensure complete recovery of vial contents.

| Description  |  |
|--------------|--|
| Reactivity   | Human  |
| Immunogen    | Recombinant human TUBB protein by E. Coli                                |
| Host         | Mouse  |
| Isotype      | IgG  |
| Clone        | 2E8-2  |
| Purification | Protein A/G Purification   |
| Conjugation  | Elab Fluor® 647(Ex/Em:650nm/665nm)                                       |
| Buffer       | PBS with 0.05% Proclin300, 1% protective protein and 50% glycerol, pH7.4 |

| Applications | Recommended Dilution                                    |
|--------------|---|
| FCM          | 0.2 µg per 10 <sup>6</sup> cells in a 100 µL suspension |

### Data



1X10<sup>6</sup> HeLa cells were intracellularly stained with 0.2 µg

Elab Fluor® 647-conjugated beta Tubulin Monoclonal Antibody (red), or 0.2 µg Elab Fluor® 647-conjugated beta Tubulin Monoclonal Antibody Isotype Control (green).

| Preparation & Storage |   |
|-----------------------|---|
| Storage               | Store at -20°C Valid for 12 months. Avoid freeze / thaw cycles. Protected from prolonged exposure to light. |
| Shipping              | The product is shipped with ice pack, upon receipt, store it immediately at the temperature recommended.    |

| Background  |  |
|---|--|
| In eukaryotes there are six members of the tubulin superfamily. $\alpha$ - and $\beta$ -tubulins polymerize into microtubules, a major component of the eukaryotic cytoskeleton. Microtubules function in many essential cellular processes, including mitosis. Both $\alpha$ and $\beta$ tubulins have a mass of around 50 kDa. Tubulin was long thought to be specific to eukaryotes. Beta-tubulin gene is commonly used as a loading control for western blot. |  |