

Recombinant Phospho-4E-BP1 (Thr37/46)) Monoclonal Antibody

catalog number: AN301307L

Note: Centrifuge before opening to ensure complete recovery of vial contents.

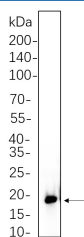
Description

Reactivity	Human;Mouse;Rat
Immunogen	A synthetic peptide corresponding to residues around (Thr37/46) of Human Phospho-4E-BP1
Host	Rabbit
Isotype	IgG, κ
Clone	7C8
Purification	Protein A
Buffer	PBS, 50% glycerol, 0.05% Proclin 300, 0.05% protein protectant.

Applications Recommended Dilution

WB	1:2000-1:10000
-----------	----------------

Data



Western Blot with Recombinant Phospho-4E-BP1 (Thr37/46)

Monoclonal Antibody at dilution of 1:1000 dilution. Lane A:

Hela whole cell lysate.

Observed-MW:15-20 kDa

Calculated-MW:13 kDa

Preparation & Storage

Storage	Store at -20°C Valid for 12 months. Avoid freeze / thaw cycles.
Shipping	Ice bag

Background

This gene encodes one member of a family of translation repressor proteins. The protein directly interacts with eukaryotic translation initiation factor 4E (eIF4E), which is a limiting component of the multisubunit complex that recruits 40S ribosomal subunits to the 5' end of mRNAs. Interaction of this protein with eIF4E inhibits complex assembly and represses translation. This protein is phosphorylated in response to various signals including UV irradiation and insulin signaling, resulting in its dissociation from eIF4E and activation of mRNA translation.

For Research Use Only