

## CD38 Polyclonal Antibody

**catalog number: E-AB-40435**

**Note:** Centrifuge before opening to ensure complete recovery of vial contents.

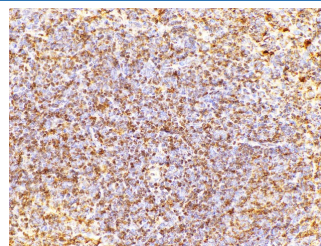
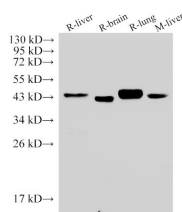
### Description

<b>Reactivity</b>	Mouse;Rat
<b>Immunogen</b>	Recombinant Mouse ADP-ribosyl cyclase/cyclic ADP-ribose hydrolase 1 protein
<b>Host</b>	Rabbit
<b>Isotype</b>	IgG
<b>Purification</b>	Antigen Affinity Purification
<b>Buffer</b>	PBS with 0.05% Proclin300, 1% protective protein and 50% glycerol, pH7.4

### Applications

Applications	Recommended Dilution
<b>WB</b>	1:500-1:2000
<b>IHC</b>	1:50-1:200

### Data



Western Blot analysis of 1)Rat liver, 2)Rat brain, 3)Rat lung, 4)Mouse liver using CD38 Polyclonal Antibody at dilution of 1:500

Immunohistochemistry of paraffin-embedded Mouse spleen using CD38 Polyclonal Antibody at dilution of 1:200

**Observed-MW:45 kDa**

**Calculated-MW:34 kDa**

### Preparation & Storage

<b>Storage</b>	Store at -20°C Valid for 12 months. Avoid freeze / thaw cycles.
<b>Shipping</b>	The product is shipped with ice pack,upon receipt,store it immediately at the temperature recommended.

### Background

CD38(cluster of differentiation38), also known as cyclic ADP ribose hydrolase is a glycoprotein found on the surface of many immune cells (white blood cells), including CD4+, CD8+, B lymphocytes and natural killer cells. CD38 also functions in cell adhesion, signal transduction and calcium signaling. In humans, the CD38 protein is encoded by the CD38 gene which is located on chromosome 4.

### For Research Use Only