

## Recombinant Human CCL11/Eotaxin Protein

**Catalog Number:** PKSH032186

**Note:** Centrifuge before opening to ensure complete recovery of vial contents.

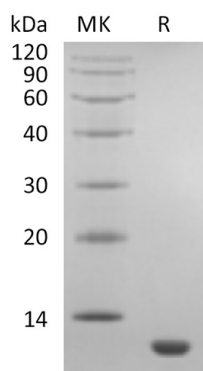
### Description

<b>Species</b>	Human
<b>Source</b>	E.coli-derived Human CCL11;Eotaxin protein Gly24-Pro97
<b>Calculated MW</b>	8.6 kDa
<b>Observed MW</b>	10 kDa
<b>Accession</b>	P51671
<b>Bio-activity</b>	Not validated for activity

### Properties

<b>Purity</b>	> 95 % as determined by reducing SDS-PAGE.
<b>Endotoxin</b>	< 1.0 EU per µg of the protein as determined by the LAL method.
<b>Storage</b>	Generally, lyophilized proteins are stable for up to 12 months when stored at -20 to -80 °C. Reconstituted protein solution can be stored at 4-8°C for 2-7 days. Aliquots of reconstituted samples are stable at < -20°C for 3 months.
<b>Shipping</b>	This product is provided as lyophilized powder which is shipped with ice packs.
<b>Formulation</b>	Lyophilized from a 0.2 µm filtered solution of 20mM PB, 150mM NaCl, pH 7.4. Normally 5% - 8% trehalose, mannitol and 0.01% Tween 80 are added as protectants before lyophilization.
	Please refer to the specific buffer information in the printed manual.
<b>Reconstitution</b>	Please refer to the printed manual for detailed information.

### Data



> 95 % as determined by reducing SDS-PAGE.

### Background

C-C Motif Chemokine 11 (CCL11) is a secreted protein that belongs to the intercrine beta (chemokine CC) family. In response to the presence of allergens, CCL11 selectively recruits eosinophils, a prominent feature of allergic inflammatory reactions. The effects of CCL11 are mediated by its binding to a G-protein-linked receptor known as a chemokine receptor. Chemokine receptors for CCL11 include CCR2, CCR3 and CCR5. However, it has been found that CCL11 has high degree selectivity for its receptor, such that they are inactive on neutrophils and monocytes, which do not express CCR3.

### For Research Use Only

Toll-free: 1-888-852-8623  
Web: [www.elabscience.com](http://www.elabscience.com)

Tel: 1-832-243-6086  
Email: [techsupport@elabscience.com](mailto:techsupport@elabscience.com)

Fax: 1-832-243-6017