

Recombinant Human Interleukin-4/IL-4 Protein (His Tag)

Catalog Number: PKSH032649

Note: Centrifuge before opening to ensure complete recovery of vial contents.

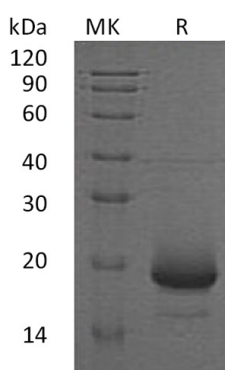
Description

Species	Human
Source	HEK293 Cells-derived Human Interleukin-4;IL-4 protein His25-Ser153, with an C-terminal His
Mol_Mass	16.0 kDa
Accession	P05112
Bio-activity	Measured in a cell proliferation assay using TF- 1 human erythroleukemic cells. The ED50 for this effect is 0.05-0.5 ng/ml.

Properties

Purity	> 95 % as determined by reducing SDS-PAGE.
Endotoxin	< 1.0 EU per µg of the protein as determined by the LAL method.
Storage	Generally, lyophilized proteins are stable for up to 12 months when stored at -20 to -80 °C. Reconstituted protein solution can be stored at 4-8°C for 2-7 days. Aliquots of reconstituted samples are stable at < -20°C for 3 months.
Shipping	This product is provided as lyophilized powder which is shipped with ice packs.
Formulation	Lyophilized from a 0.2 µm filtered solution of PBS, pH 7.4. Normally 5% - 8% trehalose, mannitol and 0.01% Tween 80 are added as protectants before lyophilization. Please refer to the specific buffer information in the printed manual.
Reconstitution	Please refer to the printed manual for detailed information.

Data



> 95 % as determined by reducing SDS-PAGE.

Background

Interleukin-4 (IL-4) is a pleiotropic cytokine that regulates diverse T and B cell responses including cell proliferation; survival and gene expression. IL-4 is produced by mast cells; T cells; and bone marrow stromal cells. IL-4 regulates the differentiation of naive CD4⁺ T cells into helper Th2 cells; characterized by their cytokine-secretion profile that includes secretion of IL-4; IL-5; IL-6; IL-10; and IL-13; which favor a humoral immune response. Another dominant function of IL-4 is the regulation of immunoglobulin class switching to the IgG1 and IgE isotypes. Excessive IL-4 production by Th2 cells has been associated with elevated IgE production and allergic response.

For Research Use Only