

SLC37A2 Polyclonal Antibody

catalog number: **E-AB-90854**

Note: Centrifuge before opening to ensure complete recovery of vial contents.

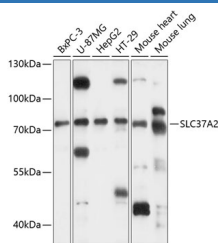
Description

Reactivity	Human;Mouse
Immunogen	Recombinant fusion protein of human SLC37A2
Host	Rabbit
Isotype	IgG
Purification	Affinity purification
Buffer	Phosphate buffered solution, pH 7.4, containing 0.05% stabilizer and 50% glycerol.

Applications

WB	1:500-1:2000
-----------	--------------

Data



Western blot analysis of extracts of various cell lines using SLC37A2 Polyclonal Antibody at 1:3000 dilution.

Observed-MV:75 kDa

Calculated-MV:13 kDa/42 kDa/54 kDa

Preparation & Storage

Storage	Store at -20°C Valid for 12 months. Avoid freeze / thaw cycles.
Shipping	The product is shipped with ice pack, upon receipt, store it immediately at the temperature recommended.

Background

SLC37A2 (solute carrier family 37 (glucose-6-phosphate transporter), member 2) is a protein-coding gene. GO annotations related to this gene include transporter activity. An important paralog of this gene is SLC37A3.

For Research Use Only