

Recombinant Mouse IL1A/IL-1A/IL-1F1 Protein (His Tag)

Catalog Number: PDEM100275

Note: Centrifuge before opening to ensure complete recovery of vial contents.

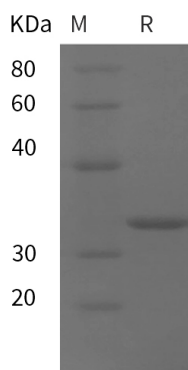
Description

Species	Mouse
Source	E.coli-derived Mouse IL1A protein Met1-Ser270, with an C-terminal His
Calculated MW	29.6 kDa
Observed MW	35 kDa
Accession	P01582
Bio-activity	Not validated for activity

Properties

Purity	> 95% as determined by reducing SDS-PAGE.
Endotoxin	< 10 EU/mg of the protein as determined by the LAL method
Storage	Generally, lyophilized proteins are stable for up to 12 months when stored at -20 to -80°C. Reconstituted protein solution can be stored at 4-8°C for 2-7 days. Aliquots of reconstituted samples are stable at < -20°C for 3 months.
Shipping	This product is provided as lyophilized powder which is shipped with ice packs.
Formulation	Lyophilized from a 0.2 µm filtered solution in PBS with 5% Trehalose and 5% Mannitol.
Reconstitution	It is recommended that sterile water be added to the vial to prepare a stock solution of 0.5 mg/mL. Concentration is measured by UV-Vis.

Data



SDS-PAGE analysis of Mouse IL1A/IL-1A/IL-1F1 proteins, 2 µg/lane of Recombinant Mouse IL1A/IL-1A/IL-1F1 proteins was resolved with SDS-PAGE under reducing conditions, showing bands at 35 kDa.

Background

Mouse Interleukin-1 (IL-1) designates two proteins, IL-1 α and IL-1 β , which are the products of distinct genes, but recognize the same cell surface receptors. IL-1 α and IL-1 β are structurally related polypeptides that show approximately 25% homology at the amino acid level. Both proteins are produced by a wide variety of cells in response to stimuli such as those produced by inflammatory agents, infections, or microbial endotoxins. The proteins are synthesized as 31 kDa precursors that are subsequently cleaved into proteins with molecular weights of approximately 17.5 kDa.

For Research Use Only

Toll-free: 1-888-852-8623
Web: www.elabscience.com

Tel: 1-832-243-6086
Email: techsupport@elabscience.com

Fax: 1-832-243-6017