

FITC Anti-Human/Mouse CD44 Antibody[IM7]

Catalog Number: E-AB-F1100UC

Note: Centrifuge before opening to ensure complete recovery of vial contents.

Description

Reactivity	Human;Mouse
Host	Rat
Isotype	Rat IgG2b, κ
Clone No.	IM7
Isotype Control	FITC Rat IgG2b, κ Isotype Control[LTF-2] [Product E-AB-F09843C]
Conjugation	FITC
Conjugation Information	FITC is designed to be excited by the Blue laser (488 nm) and detected using an optical filter centered near 530 nm (e.g., a 525/40 nm bandpass filter).
Storage Buffer	Phosphate buffered solution, pH 7.2, containing 0.09% sodium azide and 1% BSA.

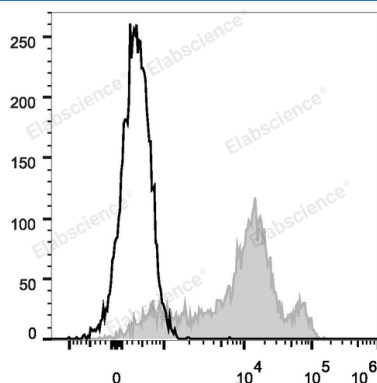
Applications

Recommended usage

FCM

Each lot of this antibody is quality control tested by flow cytometric analysis. Please check your vial before the experiment. Since applications vary, the appropriate dilutions must be determined for individual use. We suggest each investigator should titrate the reagent to obtain optimal results [The recommended concentration is 0.1-1 $\mu\text{g}/10^6$ cells in 100 μL volume].

Data



C57BL/6 murine splenocytes are stained with FITC Anti-Human/Mouse CD44 Antibody (filled gray histogram). Unstained splenocytes (empty black histogram) are used as control.

Preparation & Storage

Storage	Keep as concentrated solution. This product can be stored at 2-8°C for 12 months. Please protected from prolonged exposure to light and do not freeze.
Shipping	Ice bag

Antigen Information

Alternate Names	MDU2MDU3MIC4;CD44;CD44 antigen;CDw44;Epican;LHR;PGP-1;PGP-I;Phagocytic glycoprotein 1;Phagocytic glycoprotein I
Uniprot ID	P15379;P16070
Gene ID	12505,960

For Research Use Only

Background

CD44 is a 80-95 kD glycoprotein also known as Hermes, Pgp1, H-CAM, or HUTCH. It is expressed on all leukocytes, endothelial cells, hepatocytes, and mesenchymal cells. As B and T cells become activated or progress to the memory stage, CD44 expression increases from low or mid levels to high levels. Thus, CD44 has been reported to be a valuable marker for memory cell subsets. High CD44 expression on Treg cells has been associated with potent suppressive function via high production of IL-10. CD44 is an adhesion molecule involved in leukocyte attachment to and rolling on endothelial cells, homing to peripheral lymphoid organs and to the sites of inflammation, and leukocyte aggregation.