

## SLC8A2 Polyclonal Antibody

catalog number: E-AB-91260

**Note:** Centrifuge before opening to ensure complete recovery of vial contents.

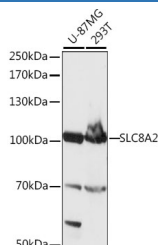
### Description

<b>Reactivity</b>	Human
<b>Immunogen</b>	Recombinant fusion protein of human SLC8A2
<b>Host</b>	Rabbit
<b>Isotype</b>	IgG
<b>Purification</b>	Affinity purification
<b>Buffer</b>	Phosphate buffered solution, pH 7.4, containing 0.05% stabilizer and 50% glycerol.

### Applications Recommended Dilution

<b>WB</b>	1:500-1:2000
-----------	--------------

### Data



Western blot analysis of extracts of various cell lines using SLC8A2 Polyclonal Antibody at 1:1000 dilution.

**Observed-MW:100 kDa**

**Calculated-MW:100 kDa**

### Preparation & Storage

<b>Storage</b>	Store at -20°C Valid for 12 months. Avoid freeze / thaw cycles.
<b>Shipping</b>	The product is shipped with ice pack, upon receipt, store it immediately at the temperature recommended.

### Background

Mediates the electrogenic exchange of  $\text{Ca}^{2+}$  against  $\text{Na}^{+}$  ions across the cell membrane, and thereby contributes to the regulation of cytoplasmic  $\text{Ca}^{2+}$  levels and  $\text{Ca}^{2+}$ -dependent cellular processes. Contributes to cellular  $\text{Ca}^{2+}$  homeostasis in excitable cells. Contributes to the rapid decrease of cytoplasmic  $\text{Ca}^{2+}$  levels back to baseline after neuronal activation, and thereby contributes to modulate synaptic plasticity, learning and memory. Plays a role in regulating urinary  $\text{Ca}^{2+}$  and  $\text{Na}^{+}$  excretion.

### For Research Use Only