

## Recombinant Human CD3E&CD3G Heterodimer (C-Fc-6His&C-Fc-Flag)

Catalog Number: PKSH034015

**Note:** Centrifuge before opening to ensure complete recovery of vial contents.

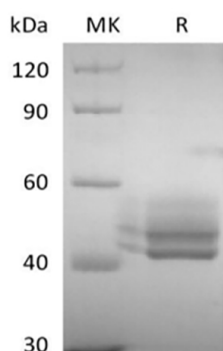
### Description

<b>Species</b>	Human
<b>Source</b>	HEK293 Cells-derived Human CD3E&CD3G Heterodimer protein Asp23-Asp126&Gln23-Ser116, with an C-terminal Fc & Flag & C-terminal Fc & His
<b>Calculated MW</b>	39.2&38.1 kDa
<b>Observed MW</b>	40-60 kDa
<b>Accession</b>	P07766&P09693
<b>Bio-activity</b>	Not validated for activity

### Properties

<b>Purity</b>	> 95 % as determined by reducing SDS-PAGE.
<b>Endotoxin</b>	< 1.0 EU per µg of the protein as determined by the LAL method.
<b>Storage</b>	Generally, lyophilized proteins are stable for up to 12 months when stored at -20 to -80 °C. Reconstituted protein solution can be stored at 4-8°C for 2-7 days. Aliquots of reconstituted samples are stable at < -20°C for 3 months.
<b>Shipping</b>	This product is provided as lyophilized powder which is shipped with ice packs.
<b>Formulation</b>	Lyophilized from a 0.2 µm filtered solution of PBS, pH 7.4. Normally 5% - 8% trehalose, mannitol and 0.01% Tween 80 are added as protectants before lyophilization.
<b>Reconstitution</b>	Please refer to the specific buffer information in the printed manual.

### Data



> 95 % as determined by reducing SDS-PAGE.

### Background

T-cell surface glycoprotein CD3 epsilon & CD3 gamma chain, also known as CD3E & CD3G, are single-pass type I membrane proteins. CD3D, together with CD3- epsilon(CD3E) , CD3-gamma and CD3-zeta, and the T-cell receptor alpha/ beta and gamma/delta heterodimers, forms the T cell receptor-CD3 complex. T cell receptor-CD3 complex plays an important role in coupling antigen recognition to several intracellular signal-transduction pathways.

### For Research Use Only