

## GFAP Monoclonal Antibody

**catalog number: E-AB-70205**

**Note:** Centrifuge before opening to ensure complete recovery of vial contents.

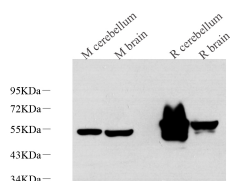
### Description

<b>Reactivity</b>	Mouse;Rat
<b>Immunogen</b>	KLH conjugated Synthetic peptide corresponding to Mouse GFAP
<b>Host</b>	Mouse
<b>Isotype</b>	IgG
<b>Clone</b>	2B12F1
<b>Purification</b>	Affinity purification
<b>Buffer</b>	Phosphate buffered solution, pH 7.4, containing 0.05% stabilizer, 1% protein protectant and 50% glycerol.

### Applications

Applications	Recommended Dilution
<b>WB</b>	1:500-1:5000
<b>IHC</b>	1:500-1:2000
<b>IF</b>	1:200-1:1000

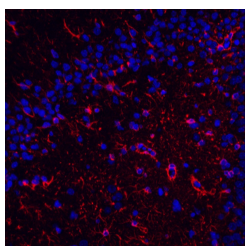
### Data



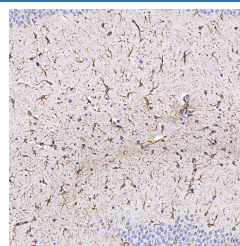
Western Blot analysis of various samples using GFAP Monoclonal Antibody at dilution of 1:1000.

**Observed-MW:49 kDa**

**Calculated-MW:49 kDa**



Immunofluorescence analysis of paraffin-embedded rat brain using GFAP Monoclonal Antibody at dilution of 1:400.



Immunohistochemistry analysis of paraffin-embedded mouse brain using GFAP Monoclonal Antibody at dilution of 1:400.

### Preparation & Storage

<b>Storage</b>	Store at -20°C Valid for 12 months. Avoid freeze / thaw cycles.
<b>Shipping</b>	The product is shipped with ice pack, upon receipt, store it immediately at the temperature recommended.

### Background

### For Research Use Only

GFAP (Glial fibrillary acidic protein), an intermediate-filament (IF) protein, is specifically expressed in cells of astroglial lineage and is widely used to mark the astroglia in the brain. It is also used as a marker for intracranial and intraspinal tumors arising from astrocytes.

## For Research Use Only

Toll-free: 1-888-852-8623  
Web: [www.elabscience.com](http://www.elabscience.com)

Tel: 1-832-243-6086  
Email: [techsupport@elabscience.com](mailto:techsupport@elabscience.com)

Fax: 1-832-243-6017

Rev. V1.7