

SOGA1 Polyclonal Antibody

catalog number: **E-AB-66868**

Note: Centrifuge before opening to ensure complete recovery of vial contents.

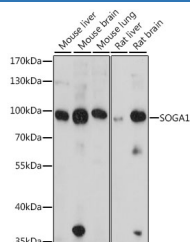
Description

Reactivity	Human;Mouse;Rat
Immunogen	Recombinant fusion protein of human SOGA1 (NP_542194.2).
Host	Rabbit
Isotype	IgG
Purification	Affinity purification
Buffer	Phosphate buffered solution, pH 7.4, containing 0.05% stabilizer and 50% glycerol.

Applications Recommended Dilution

WB	1:500-1:2000
-----------	--------------

Data



Western blot analysis of extracts of various cell lines using SOGA1 Polyclonal Antibody at dilution of 1:1000.

Observed-MW:80 kDa

Calculated-MW:55 kDa/115 kDa/159 kDa/183 kDa

Preparation & Storage

Storage	Store at -20°C Valid for 12 months. Avoid freeze / thaw cycles.
Shipping	The product is shipped with ice pack, upon receipt, store it immediately at the temperature recommended.

Background

SOGA1 (Suppressor Of Glucose, Autophagy Associated 1) is a Protein Coding gene. An important paralog of this gene is MTCL1.

For Research Use Only