

## SCRN3 Polyclonal Antibody

**catalog number: E-AB-65001**

**Note:** Centrifuge before opening to ensure complete recovery of vial contents.

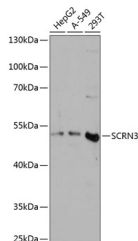
### Description

<b>Reactivity</b>	Human;Mouse;Rat
<b>Immunogen</b>	Recombinant fusion protein of human SCRIN3 (NP_078859.2).
<b>Host</b>	Rabbit
<b>Isotype</b>	IgG
<b>Purification</b>	Affinity purification
<b>Buffer</b>	Phosphate buffered solution, pH 7.4, containing 0.05% stabilizer and 50% glycerol.

### Applications

Applications	Recommended Dilution
<b>WB</b>	1:500-1:2000
<b>IF</b>	1:50-1:200

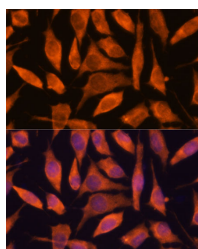
### Data



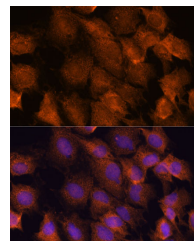
Western blot analysis of extracts of various cell lines using SCRIN3 Polyclonal Antibody at dilution of 1:3000.

**Observed-MW:48 kDa**

**Calculated-MW:47 kDa/48 kDa**



Immunofluorescence analysis of L929 cells using SCRIN3 Polyclonal Antibody at dilution of 1:100. Blue: DAPI for nuclear staining.



Immunofluorescence analysis of C6 cells using SCRIN3 Polyclonal Antibody at dilution of 1:100. Blue: DAPI for nuclear staining.

### Preparation & Storage

<b>Storage</b>	Store at -20°C Valid for 12 months. Avoid freeze / thaw cycles.
<b>Shipping</b>	The product is shipped with ice pack,upon receipt,store it immediately at the temperature recommended.

### Background

SCRIN3 (Secernin 3) is a Protein Coding gene. Diseases associated with SCRIN3 include Bile Acid Synthesis Defect, Congenital, 1 and Acrodysostosis. Gene Ontology (GO) annotations related to this gene include dipeptidase activity. An important paralog of this gene is SCRIN2.

### For Research Use Only