

Recombinant Glycophorin C Monoclonal Antibody

catalog number: **AN301533L**

Note: *Centrifuge before opening to ensure complete recovery of vial contents.*

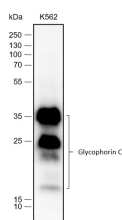
Description

Reactivity	Human;
Immunogen	Recombinant human Glycophorin C fragment
Host	Rabbit
Isotype	IgG, κ
Clone	A232
Purification	Protein A purified
Buffer	PBS, 50% glycerol, 0.05% Proclin 300, 0.05% protein protectant.

Applications

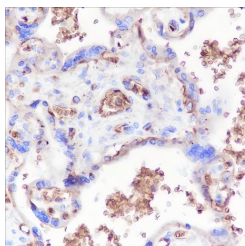
Applications	Recommended Dilution
WB	1:500-1:1000
IHC	1:200-1:1000

Data

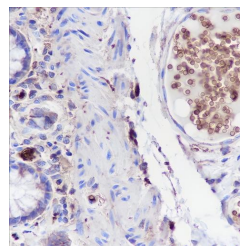


Western Blot with Glycophorin C Monoclonal Antibody at dilution of 1:1000. Lane 1: K562

Observed-MW:14-35 kDa
Calculated-MW:14 kDa



Immunohistochemistry of paraffin-embedded Human placenta using Glycophorin C Monoclonal Antibody at dilution of 1:1000.



Immunohistochemistry of paraffin-embedded Human colon using Glycophorin C Monoclonal Antibody at dilution of 1:1000.

Preparation & Storage

Storage	Store at -20°C Valid for 12 months. Avoid freeze / thaw cycles.
Shipping	Ice bag

Background

This protein is a minor sialoglycoprotein in human erythrocyte membranes. The blood group Gerbich antigens and receptors for Plasmodium falciparum merozoites are most likely located within the extracellular domain. Glycophorin-C plays an important role in regulating the stability of red cells.

For Research Use Only