

PPP2CA Polyclonal Antibody

catalog number: E-AB-11494

Note: Centrifuge before opening to ensure complete recovery of vial contents.

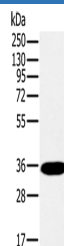
Description

| | |
|---------------------|--|
| Reactivity | Human;Mouse;Rat |
| Immunogen | Recombinant protein of human PPP2CA |
| Host | Rabbit |
| Isotype | IgG |
| Purification | Affinity purification |
| Buffer | Phosphate buffered solution, pH 7.4, containing 0.05% stabilizer and 50% glycerol. |

Applications

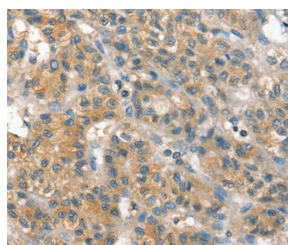
| Applications | Recommended Dilution |
|--------------|----------------------|
| WB | 1:1000-1:5000 |
| IHC | 1:25-1:100 |

Data

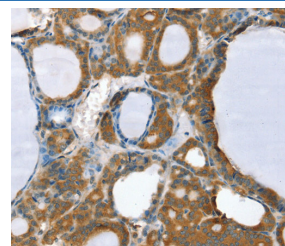


Western Blot analysis of Mouse brain tissue using PPP2CA Polyclonal Antibody at dilution of 1:450

Calculated-MW:36 kDa



Immunohistochemistry of paraffin-embedded Human liver cancer using PPP2CA Polyclonal Antibody at dilution of 1:35



Immunohistochemistry of paraffin-embedded Human thyroid cancer using PPP2CA Polyclonal Antibody at dilution of 1:35

Preparation & Storage

| | |
|-----------------|--|
| Storage | Store at -20°C Valid for 12 months. Avoid freeze / thaw cycles. |
| Shipping | The product is shipped with ice pack, upon receipt, store it immediately at the temperature recommended. |

Background

This gene encodes the phosphatase 2A catalytic subunit. Protein phosphatase 2A is one of the four major Ser/Thr phosphatases, and it is implicated in the negative control of cell growth and division. It consists of a common heteromeric core enzyme, which is composed of a catalytic subunit and a constant regulatory subunit, that associates with a variety of regulatory subunits. This gene encodes an alpha isoform of the catalytic subunit.

For Research Use Only