

Recombinant Mouse Prolactin/Prl Protein (His Tag)

Catalog Number: PDEM100229

Note: Centrifuge before opening to ensure complete recovery of vial contents.

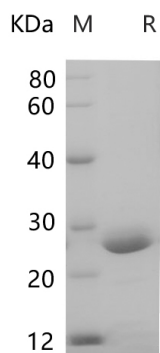
Description

Species	Mouse
Source	E.coli-derived Mouse Prolactin protein Leu30-Cys226, with an N-terminal His & C-terminal His
Calculated MW	23.8 kDa
Observed MW	24-28 kDa
Accession	P06879
Bio-activity	Not validated for activity

Properties

Purity	> 90% as determined by reducing SDS-PAGE.
Endotoxin	< 10 EU/mg of the protein as determined by the LAL method
Storage	Generally, lyophilized proteins are stable for up to 12 months when stored at -20 to -80°C. Reconstituted protein solution can be stored at 4-8°C for 2-7 days. Aliquots of reconstituted samples are stable at < -20°C for 3 months.
Shipping	This product is provided as lyophilized powder which is shipped with ice packs.
Formulation	Lyophilized from a 0.2 µm filtered solution in PBS with 5% Trehalose and 5% Mannitol.
Reconstitution	It is recommended that sterile water be added to the vial to prepare a stock solution of 0.5 mg/mL. Concentration is measured by UV-Vis.

Data



SDS-PAGE analysis of Mouse Prolactin/Prl proteins, 2 µg/lane of Recombinant Mouse Prolactin/Prl proteins was resolved with SDS-PAGE under reducing conditions, showing bands at 24-28 kDa.

Background

Prolactin acts primarily on the mammary gland by promoting lactation.

For Research Use Only

Toll-free: 1-888-852-8623
Web: www.elabscience.com

Tel: 1-832-243-6086
Email: techsupport@elabscience.com

Fax: 1-832-243-6017