

## PTCD3 Polyclonal Antibody

catalog number: **E-AB-62466**

**Note:** Centrifuge before opening to ensure complete recovery of vial contents.

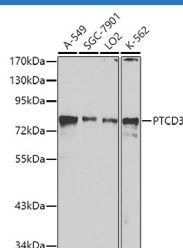
### Description

<b>Reactivity</b>	Human;Mouse;Rat
<b>Immunogen</b>	Recombinant fusion protein of human PTCD3 (NP_060422.4).
<b>Host</b>	Rabbit
<b>Isotype</b>	IgG
<b>Purification</b>	Affinity purification
<b>Buffer</b>	Phosphate buffered solution, pH 7.4, containing 0.05% stabilizer and 50% glycerol.

### Applications

Applications	Recommended Dilution
<b>WB</b>	1:500-1:2000

### Data



Western blot analysis of extracts of various cell lines using PTCD3 Polyclonal Antibody at dilution of 1:1000.

**Observed-MW:79 kDa**

**Calculated-MW:31 kDa/78 kDa**

### Preparation & Storage

<b>Storage</b>	Store at -20°C Valid for 12 months. Avoid freeze / thaw cycles.
<b>Shipping</b>	The product is shipped with ice pack, upon receipt, store it immediately at the temperature recommended.

### Background

PTCD3 (Pentatricopeptide Repeat Domain 3) is a Protein Coding gene. Diseases associated with PTCD3 include Leigh Syndrome, French Canadian Type and Leigh Syndrome. Among its related pathways are Organelle biogenesis and maintenance and Mitochondrial translation. Gene Ontology (GO) annotations related to this gene include ribosomal small subunit binding.

### For Research Use Only