

PE Anti-Human CD1b Antibody[SN13 (K5-1B8)]

Catalog Number: AN00425D

Note: Centrifuge before opening to ensure complete recovery of vial contents.

Description

Reactivity	Human
Host	Mouse
Isotype	Mouse IgG1, κ
Clone No.	SN13 (K5-1B8)
Isotype Control	PE Mouse IgG1, κ Isotype Control[MOPC-21] [Product E-AB-F09792D]
Conjugation	PE
Conjugation Information	PE is designed to be excited by the Blue (488 nm), Green (532 nm) and Yellow-Green (561 nm) lasers and detected using an optical filter centered near 575 nm (e.g., a 585/42 nm bandpass filter).
Storage Buffer	Phosphate buffered solution, pH 7.2, containing 0.09% stabilizer.

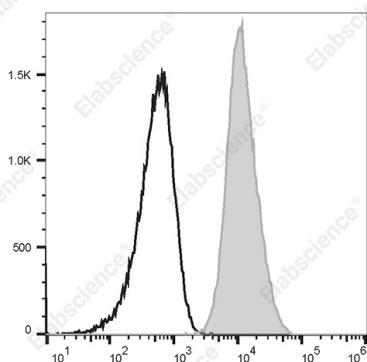
Applications

FCM

Recommended usage

Each lot of this antibody is quality control tested by flow cytometric analysis. **The amount of the reagent is suggested to be used 5 μ L of antibody per test (million cells in 100 μ L staining volume or per 100 μ L of whole blood).** Please check your vial before the experiment. Since applications vary, the appropriate dilutions must be determined for individual use.

Data



Staining of the Molt-4 cell line with PE Anti-Human CD1b Antibody[SN13 (K5-1B8)] (filled gray histogram) or PE Mouse IgG1, κ Isotype Control (empty black histogram). Total viable cells were used for analysis.

Preparation & Storage

Storage	Keep as concentrated solution. This product can be stored at 2-8°C for 24 months. Please protected from prolonged exposure to light and do not freeze.
Shipping	Ice bag

Antigen Information

Alternate Names	R1;CD1b
Uniprot ID	P09016
Gene ID	910

For Research Use Only

Background

CD1b is a 43 kD member of the immunoglobulin superfamily also known as R1. It is a type I membrane glycoprotein with structural similarities to MHC class I and is non-covalently associated with β 2-microglobulin. In humans, CD1 family consists of group I proteins (CD1a, CD1b, CD1c), group II (CD1d), and group III (CD1e). CD1b plays a role in non-peptide glycolipid antigen presentation to CD1-restricted T cells. It is expressed on cortical double positive and single positive thymocytes, Langerhans cells, and dendritic cells. In addition to antigen presentation, CD1b has been implicated in thymic T cell development.