

Recombinant Mouse IFN α 2 Protein(His Tag)

Catalog Number: PDMM100239

Note: Centrifuge before opening to ensure complete recovery of vial contents.

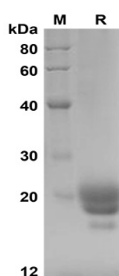
Description

Species	Mouse
Source	Mammalian-derived Mouse IFN α 2 protein Cys24-Glu190, with an C-terminal His
Mol_Mass	18.2 kDa
Accession	P01573
Bio-activity	Not validated for activity

Properties

Purity	> 90% as determined by reducing SDS-PAGE.
Endotoxin	< 1.0 EU/mg of the protein as determined by the LAL method
Storage	Generally, lyophilized proteins are stable for up to 12 months when stored at -20 to -80 °C. Reconstituted protein solution can be stored at 4-8°C for 2-7 days. Aliquots of reconstituted samples are stable at < -20°C for 3 months.
Shipping	This product is provided as lyophilized powder which is shipped with ice packs.
Formulation	Lyophilized from a 0.2 μ m filtered solution in PBS with 5% Trehalose and 5% Mannitol.
Reconstitution	It is recommended that sterile water be added to the vial to prepare a stock solution of 0.5 mg/mL. Concentration is measured by UV-Vis

Data



SDS-PAGE analysis of Mouse IFN α 2 proteins, 2 μ g/lane of Recombinant Mouse IFN α 2 proteins was resolved with SDS-PAGE under reducing conditions, showing bands at 18-20 kDa

Background

IFNA2 (Interferon Alpha 2) is a Protein Coding gene. This gene is a member of the alpha interferon gene cluster on chromosome 9. The encoded protein is a cytokine produced in response to viral infection. Type I Interferons (IFNs) are well-known cytokines that exert antiviral activity, antitumor activity, and immunomodulatory effects. Interferon tau (IFN T), a type I IFN similar to alpha IFNs (IFNA), is the pregnancy recognition signal produced by the ruminant conceptus. Among the IFN- α genes, a total of 28 different sequence variants have been described. The three principal subtypes of IFN α -2 are designated α -2a, α -2b, and α -2c. IFN α -2b is being the predominant allele while IFN α -2a is less predominant and IFN α -2c only a minor allelic variant.

For Research Use Only