

Recombinant Human Basigin/CD147 (C-mFc)

Catalog Number: PKSH034037

Note: Centrifuge before opening to ensure complete recovery of vial contents.

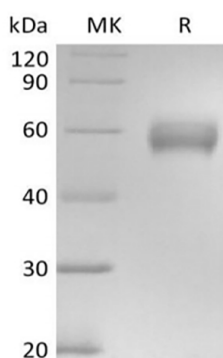
Description

Species	Human
Source	HEK293 Cells-derived Human Basigin;CD147 protein Ala22-His205, with an C-terminal mFc
Calculated MW	46.5 kDa
Observed MW	55-65 kDa
Accession	P35613-2
Bio-activity	Not validated for activity

Properties

Purity	> 95 % as determined by reducing SDS-PAGE.
Endotoxin	< 1.0 EU per µg of the protein as determined by the LAL method.
Storage	Generally, lyophilized proteins are stable for up to 12 months when stored at -20 to -80 °C. Reconstituted protein solution can be stored at 4-8°C for 2-7 days. Aliquots of reconstituted samples are stable at < -20°C for 3 months.
Shipping	This product is provided as lyophilized powder which is shipped with ice packs.
Formulation	Lyophilized from a 0.2 µm filtered solution of 20mM PB, 150mM NaCl, pH 7.2. Normally 5% - 8% trehalose, mannitol and 0.01% Tween 80 are added as protectants before lyophilization.
	Please refer to the specific buffer information in the printed manual.
Reconstitution	Please refer to the printed manual for detailed information.

Data



> 95 % as determined by reducing SDS-PAGE.

Background

Basigin/CD147 is a member of the immunoglobulin superfamily with homology to both the immunoglobulin V domain and MHC class II antigen beta-chain. This protein play important roles in variety of events including spermatogenesis, embryo implantation, neural network formation. CD147 induces the production and release of matrix metalloproteinases (MMP) in the surrounding mesenchymal cells and tumor cells, and thereby promotes invasion, metastasis, growth and survival of malignant cells. Furthermore, CD147 also serves as a receptor for extracellular cyclophilin and its association with integrins might be important in signal transduction. CD147 displays increased expression in many cancers, and it has been previously demonstrated to participate in cancer metastasis and progression.

For Research Use Only