

## SULT1B1 Polyclonal Antibody

**catalog number: E-AB-11614**

**Note:** Centrifuge before opening to ensure complete recovery of vial contents.

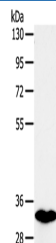
### Description

<b>Reactivity</b>	Human
<b>Immunogen</b>	Recombinant protein of human SULT1B1
<b>Host</b>	Rabbit
<b>Isotype</b>	IgG
<b>Purification</b>	Affinity purification
<b>Buffer</b>	Phosphate buffered solution, pH 7.4, containing 0.05% stabilizer and 50% glycerol.

### Applications

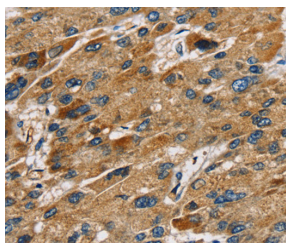
Applications	Recommended Dilution
<b>WB</b>	1:1000-1:5000
<b>IHC</b>	1:25-1:100

### Data



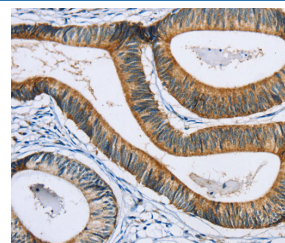
Western Blot analysis of Human fetal intestines tissue using SULT1B1 Polyclonal Antibody at dilution of 1:800

**Calculated-MW:35 kDa**



Immunohistochemistry of paraffin-embedded Human liver cancer using SULT1B1 Polyclonal Antibody at dilution of

1:30



Immunohistochemistry of paraffin-embedded Human colon cancer using SULT1B1 Polyclonal Antibody at dilution of

1:30

### Preparation & Storage

<b>Storage</b>	Store at -20°C Valid for 12 months. Avoid freeze / thaw cycles.
<b>Shipping</b>	The product is shipped with ice pack, upon receipt, store it immediately at the temperature recommended.

### Background

Sulfotransferase enzymes catalyze the sulfate conjugation of many hormones, neurotransmitters, drugs, and xenobiotic compounds. These cytosolic enzymes are different in their tissue distributions and substrate specificities. The gene structure (number and length of exons) is similar among family members. However, the total genomic length of this gene is greater than that of other SULT1 genes.

### For Research Use Only