

Recombinant Human Reticulocalbin 3/RCN3 Protein (aa 21-328, His Tag)

Catalog Number: PKSH033292

Note: Centrifuge before opening to ensure complete recovery of vial contents.

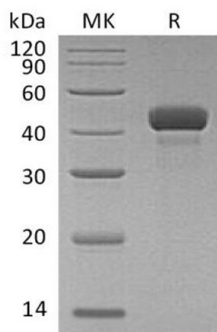
Description

Species	Human
Source	HEK293 Cells-derived Human Reticulocalbin 3/RCN3 protein Lys21-Leu328, with an C-terminal His
Calculated MW	36.2 kDa
Observed MW	43 kDa
Accession	Q96D15
Bio-activity	Not validated for activity

Properties

Purity	> 95 % as determined by reducing SDS-PAGE.
Concentration	Subject to label value.
Endotoxin	< 1.0 EU per µg of the protein as determined by the LAL method.
Storage	Store at < -20°C, stable for 6 months. Please minimize freeze-thaw cycles.
Shipping	This product is provided as liquid. It is shipped at frozen temperature with blue ice/gel packs. Upon receipt, store it immediately at < -20°C.
Formulation	Supplied as a 0.2 µm filtered solution of 20mM Tris-HCl, 150mM NaCl, 1mM DTT, 10% Glycerol, pH 7.4.

Data



> 95 % as determined by reducing SDS-PAGE.

Background

Reticulocalbin-3 is a member of the CREC family that is involved in the secretory pathway. Members of the CREC family consist of a number of multiple EF-hand domains. Reticulocalbin-3 localizes to the endoplasmic reticulum lumen. The bioinformatic analysis of Reticulocalbin-3 reveal that it is a putative Ca²⁺-binding protein. In addition; it has been shown that autoactivation and secretion of PACE4 was increased upon co-expression with Reticulocalbin-3. The proPACE4-RCN-3 complex is plays an important role in the biosynthesis of PACE4.